

ARCHIVES

AN EXHIBITION OF ETCHINGS

7. 1917



1917

THE ART INSTITUTE OF CHICAGO

CATALOGUE OF AN
EXHIBITION OF
ETCHINGS

UNDER THE MANAGE-
MENT OF THE CHICAGO
SOCIETY OF ETCHERS



FEBRUARY 1 TO MARCH 4, 1917

CHICAGO SOCIETY OF ETCHERS

OFFICERS

OTTO J. SCHNEIDER, President
THOMAS E. TALLMADGE, Vice President
BERTHA E. JAKES, Secretary and Treasurer

JURY OF SELECTION

W. A. LEVY, New York
JOHN W. COTTON, Toronto
OTTO J. SCHNEIDER, Chicago
RALPH FLETCHER SEYMOUR, Chicago
HELEN HYDE, Chicago

THE Chicago Society of Etchers was organized in January 1910 with twenty members. As its work became known, the membership grew until it is now international in scope, some of its hundred and fourteen active members being in Italy, France, Sweden, Germany, England, Canada and Japan.

Its ability to maintain traveling exhibitions throughout the country, in addition to the one large collection shown in the Art Institute each year, is mainly due to the support of associate members, numbering two hundred and fifteen. These members are scattered all over the United States and abroad.

Each year the Society issues a publication for its associate members treating of some phase of etching, which includes an original signed etching made by one of its active members for this purpose and not otherwise available.

The publication for 1916 is a book on *The Etching of Contemporary Life*, written by Frank Weitenkampf, Chief of the Print Department of the New York Public Library, and includes an etching by Ernest D. Roth of New York. This was selected in competition from eighteen entries and received a prize of fifty dollars offered by an associate member.

The book is the work of one man, Dard Hunter of Marlborough, N. Y., who made each sheet of paper by hand with the seal of the Society as water-mark, designed, cut and cast the type and printed the book on a hand press. These publications are limited to the associate membership and no copies are for sale.

Ten per cent. of associate dues provides a fund with which the Society purchases etchings from the annual

exhibition and presents to the Art Institute for its permanent collection. This fund is augmented by voluntary contributions from members, or Societies, desiring to further the interest in etching.

The committee to select the etchings from the present exhibition is as follows:

HORACE OAKLEY,
P. B. ECKHART,
OLIVER DENNETT GROVER,
OTTO J. SCHNEIDER,
ALICE ROULLIER.

The Society pays no salaries and has no revenue aside from the annual dues of the associate and active members. No commissions are taken for the sale of etchings except the minimum one of ten per cent required by museums where exhibitions are held.

For this exhibition, 551 etchings were submitted out of which 283 were accepted.

On Wednesday and Saturday afternoons of each week during February, from 2 to 4, some member of the Society will be in the exhibition room to demonstrate the printing of etchings.

For information regarding exhibits for sale, apply to Miss Willard at desk. Duplicate proofs may be ordered.

All payments for exhibits purchased must be made to the Secretary of the Art Institute.

CATALOGUE OF EXHIBITION

FEBRUARY, 1917

ACHENER, MAURICE

- 1 Anstruweel
- 2 Old houses at Fribourg
- 3 Le Gatteron, Fribourg
- 4 Vico Alto, Siena

ADDAMS, CLIFFORD

- 5 Porte della Costa, Venice
- 6 Charing Cross bridge
- 7 An obscure turning, Venice *Sogau 25*
- 8 Keppel's print shop, New York
- 9 Dordrecht harbor
- 10 Dordrecht canal
- 11 Thames

ARMINGTON, FRANK M.

- 12 Mosque Bidi, Mahrez á Tunis

ARMINGTON, CAROLINE H.

- 13 Pont du Carrousel, Paris
- 14 Vieille maison, Moret
- 15 Cour du dragon

ARMS, JOHN TAYLOR

- 16 Old world

BAILEY, HENRY LEWIS

- 17 Eucalyptus trees
18 Workers

BARONE, ANTONIO

- 19 Spanish necklace
20 Roberto
21 Cellist

BENSON, FRANK W.

- 22 Ducks
23 River
24 Pintails
25 Evening
26 Old squaws
(uH 8) 27 Geese alighting
28 Male whistler
29 Migrating geese
30 Second island outlet
31 Marshes of Long Point
32 On the Ipswich river
33 Pair of yellow legs

BICKNELL, W. H. W.

- 34 Hillside farm
35 Row of trees

BOSWORTH, WINIFRED

- 36 Ruth

BREMOND, JEAN LOUIS,

- 37 Exile
38 Bath

BREITMAYER, M. V.

- 39 After showers
40 Approaching storm

BROWN, BENJAMIN

- 41 Venetian boats
42 Doorway

BULLER, CECIL T.

- 43 Notre Dame
44 Little houses, Chelsea

BURR, GEORGE E. 7

- 45 Pity's at the Pool
- 46 Windsor Castle
- 47 March snow
- 48 Clear creek meadows

CALEWAERT, LOUIS,

- 49 Casa Salerno
- 50 In Sicily

CLARK, ALSTON S. ,

- 51 Doorway in Paris

CRANE, DONN P. 1

- 52 Bettie

COLSON, FRANK V. \

- 53 Jack
- 54 Skipper

COLWELL, ELIZABETH

- 55 Crooked tree
- 56 Manomet beach
- 57 Lily pond, Jackson Park

CONGDON, THOMAS R. '

- 58 La Seine

CORDOBA, MATHILDE DE ,

- 59 1830
60 Hansel
61 Dorothy
62 Winter
63 Enfant aux ballons

COTTON, JOHN W. ,

- 64 Tranquility
65 Belfry of Bruges
66 Highway
67 Fish street, St. Ives
68 Mending nets, St. Ives

DEY, MUKUL CHANDRA,

- 69 Szukalski
70 Japanese girl
71 Bengalese native, Calcutta
72 Sketches of heads

DODGE, OZIAS ,

- 73 Hallowe'en
74 Blue pool
75 Evening on the dunes

DOOLITTLE, H. L.

- 76 Mulgardt tower
- 77 San Fernando mission

ESKRIDGE, ROBERT L.

- 78 Street in Little Sicily
- 79 Shop in Little Sicily
- 80 Charles Haag, sculptor
- 81 Humoresque, Dvorak
- 82 Bacchante, Scheherazade

FISKE, GERTRUDE

- 83 Birches
- 84 Young birches

GALLAGHER, SEARS

- 85 Roger's building
- 86 Battery, New York
- 87 T wharf from harbor, Boston

GARRETT, EDMUND H.

- 88 George Fuller's studio, Deerfield, Mass.

GARRETT, THERESA A.

- 89 A rendezvous with Death

GETCHELL, EDITH LORING .

- 90 Deserted craft

GLEESON, C. K.,

- 91 A lintel, Toledo, Spain
92 Roofs, Paris

GOETSCH, GUSTAV F.

- 93 St. Croix valley
94 Gloucester harbor

GOLDTHWAITE, ANNE .

- 95 Polo players
96 Carnival
97 L'Anglaise
98 A fairy tale

GREENBERG, MORRIS .

- 99 Wharf
100 Coal yard
101 City dock

GRIFFITH, LOUIS O. .

- 102 Price of bacon
103 Rainy day, New Orleans

HAMMERSMITH, PAUL

- 104 Close of day
105 Brook

HASSAM, CHILDE

- 106 Church across the way
107 Washington's birthday, N. Y.
108 Newfield, N. H.

HEWITT, EDWARD S.

- 109 Peck slip
110 Long shadows
111 River meadows

HIGGINS, EUGENE

- 112 Rent bill
113 Under a bridge
114 Girl of the poor
115 Woman and her work

HOFFMAN, GUSTAV A.

- 116 Solitude
117 New England road
118 Clearing of the storm

HORNBY, LESTER G.

- 119 Rue Eginhard, Paris
120 Burgos, Spain
121 Mountaineer of old Castile
122 Paseo de San Sebastian, Granada
123 Little Spanish wine house, Madrid

HYDE, HELEN,

- 124 Marietta
125 Home of Gabriel
126 Becky and the baby
127 Imps of Chinatown
128 Daimio's daughter

JAQUES, BERTHA E.,

- 129 Tower bridge, London
130 Thames shipping
131 Fog on Thames
132 Venice roofs.
133 Chioggia canal
134 Rag picker's shop, Florence
135 Back of a Roman house

JOPLING, F. W.

- 136 Ship builder's yard

JUNG, C. JAC

- 137 Placid stream
- 138 Hills and valley
- 139 Willows in winter

KAMINSKI, A.

- 140 Paris

KINNEY, TROY

- 141 Pastorale
- 142 Bacchante
- 143 The Turtle
- 144 Seventh veil
- 145 Lopokova and Nijinski
- 146 Adolf Bolm in Price Igor

LARSEN, CHARLES P.

- 147 Life
- 148 Omega

LEACH, BERNARD

- 149 A friend
- 150 Self portrait
- 151 Charlie Priony
- 152 Hakone mountains, Japan

LEICH, CHESTER ,

- 153 Study

LEMONS, PEDRO J. .

- 154 Fishing day

LESTER, WILLIAM H. ,

- 155 Waterhole
156 Day herder

LEVY, WILLIAM AUERBACH .

- 157 Faithful (u# 2)
158 Journey's end
159 Normandy fisherman

LEVY, BEATRICE S. ,

- 160 Provincetown houses
161 Through the old gate

LEWIS, ALLEN ,

- 162 Excavation
163 Corner butcher shop

LEWIS, MARTIN ,

- 164 At sea

LINDBORG, INGEBORG ANDREASEN ,

- 165 Landscape painter
166 Woman with spectacles
167 Prof. Gonden

LITTLE, PHILIP ,

- 168 Seining at dawn
169 Fishermen and smelters
170 Mending the bridge
171 Outward bound
172 Ground swell
173 Coasters, Salem Harbor

MARSCHENER, ARTHUR A.,

- 174 The flight
175 Gusty day

MERRILL, KATHARINE ,

- 176 Eight book plates

MILHAU, ZELLA DE

- 177 Boats along shore
- 178 Smithy's home

MODJESKA, MARYLKA

- 179 Sunlit street
- 180 Old pine tree
- 181 In the harbor
- 182 Market scene

illus in Bull 11-3-285 (17)

MURPHY, JOHN J. A.

- 183 End of day
- 184 Pot shop
- 185 Eve

NUYTENS, J. P.

- 186 Dorothea

O'CONNOR, HENRY

- 187 River Charles

PARTRIDGE, ROY

- 188 The cloud
- 189 Tatoosh range, Seattle
- 190 Cathedrals of commerce

PAULUS, FRANCIS P.

- 191 In the crypt
- 192 Fish market
- 193 Rag market, Bruges

QUINLAN, WILL J.

- 194 Varick street
- 195 Construction piers

REED, EARL H.

- 196 Laying down the law
- 197 Moon in the marsh

REINDEL, WILHELM GEORG

- 198 Mid winter
- 199 Summer skies
- 200 Woods and fields

ROCHE, M. PAUL

- (u#A)
- 201 John Burroughs
 - 202 Hudson Maxim
 - 203 Beach party

ROGERS, JOHN A.

- 204 Old sugar mill

ROTH, ERNEST D.,

- 205 Cliffside (u # 3)
206 Gisors
207 Roman Forum
208 Farm house
209 Hill town, Assisi
210 Courtyard, Rouen
211 Farm in Picardy

RYERSON, MARGERY AUSTEN,

- 212 Asleep

SELDEN, HENRY BILL,

- 213 Fishermen buying bait

SENSENEY, GEORGE,

- 214 Rising moon

SEYMOUR, RALPH FLETCHER,

- 215 Winter
216 Doorway
217 Tamarack
218 Two trees, Ravinia
219 Spring in Trepiez
220 Fourth Presbyterian Church

SCHNEIDER, OTTO J.

- 221 Michigan Boulevard
222 Facade of Art Institute (M.H.)

SHOPE, HENRY B.

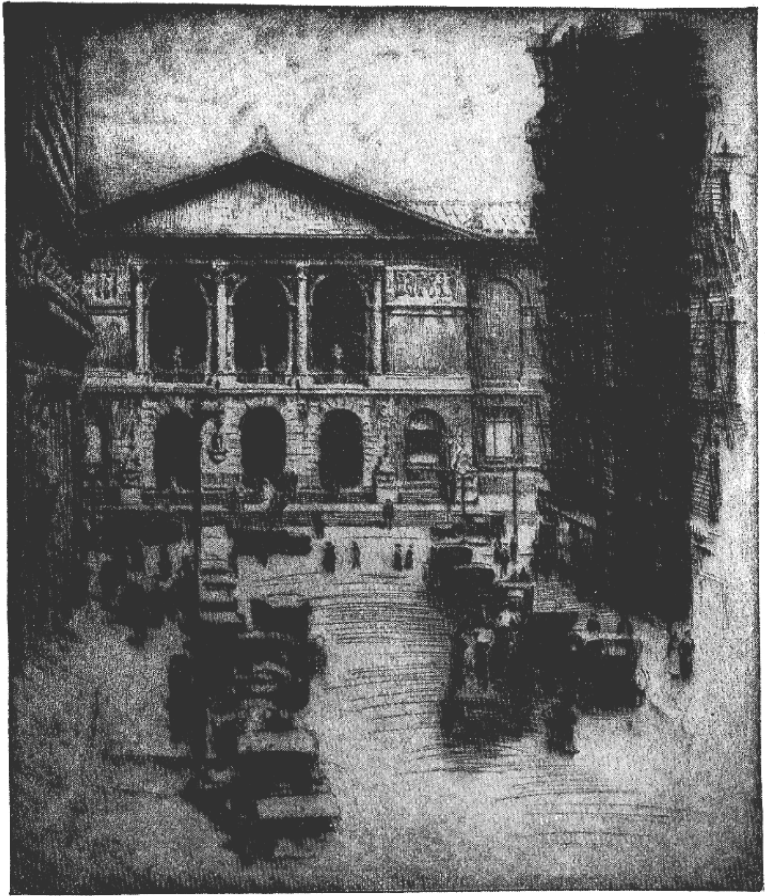
- 223 Cart in the forest
224 Old street, Blois
225 Cow lane
226 Cathedral, Tours

SLOAN, J. BLANDING

- 227 Supplication
228 Intrusion
229 Whimsical nature
230 Raking leaves

SMITH, J. ANDRÉ

- 231 Fishing huts
232 River shop
233 Cornwall bridge
234 Paradise hill
235 Connecticut village
236 Connecticut marshes
237 New Haven wharfs
238 Island shelter

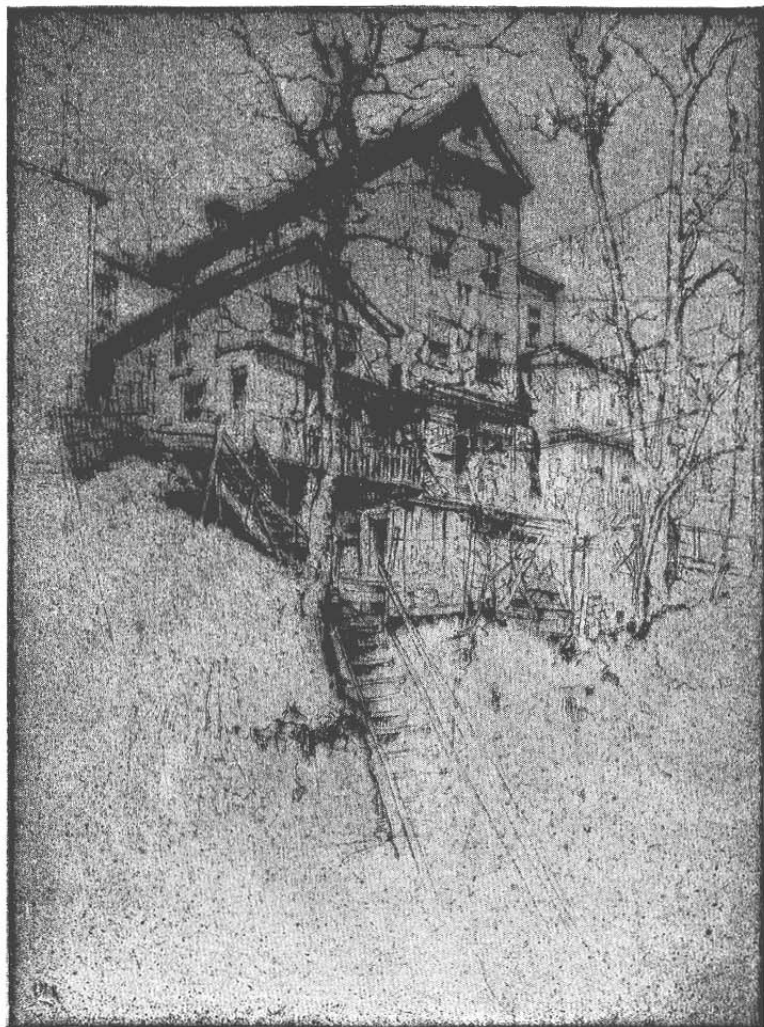


222
222

ART INSTITUTE
Otto J. Schneider



#157 FAITHFUL
W. A. Levy



#205

CLIFFSIDE
Ernest D. Roth



#201

JOHN BURROUGHS
M. Paul Roche



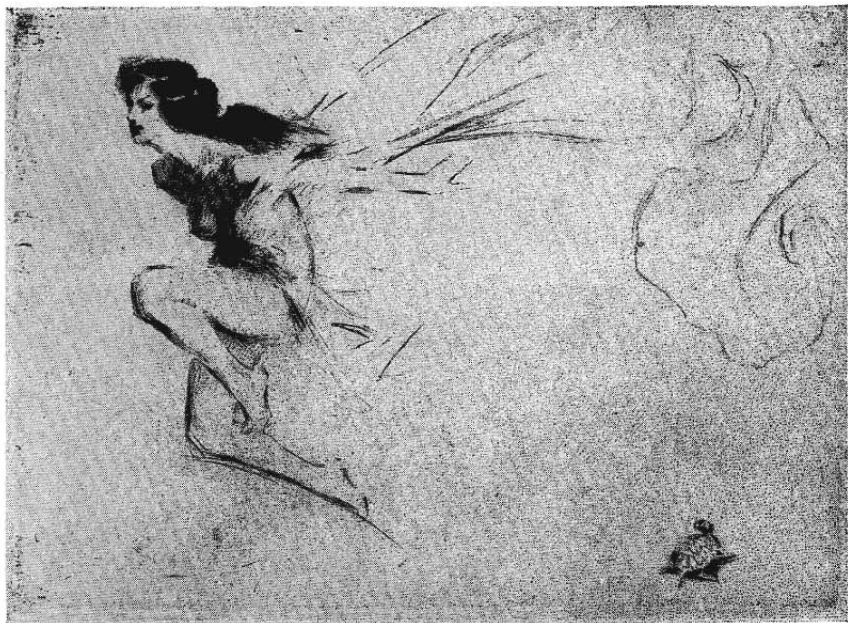
#264

CANAL IN VENICE
J. C. Vondrous

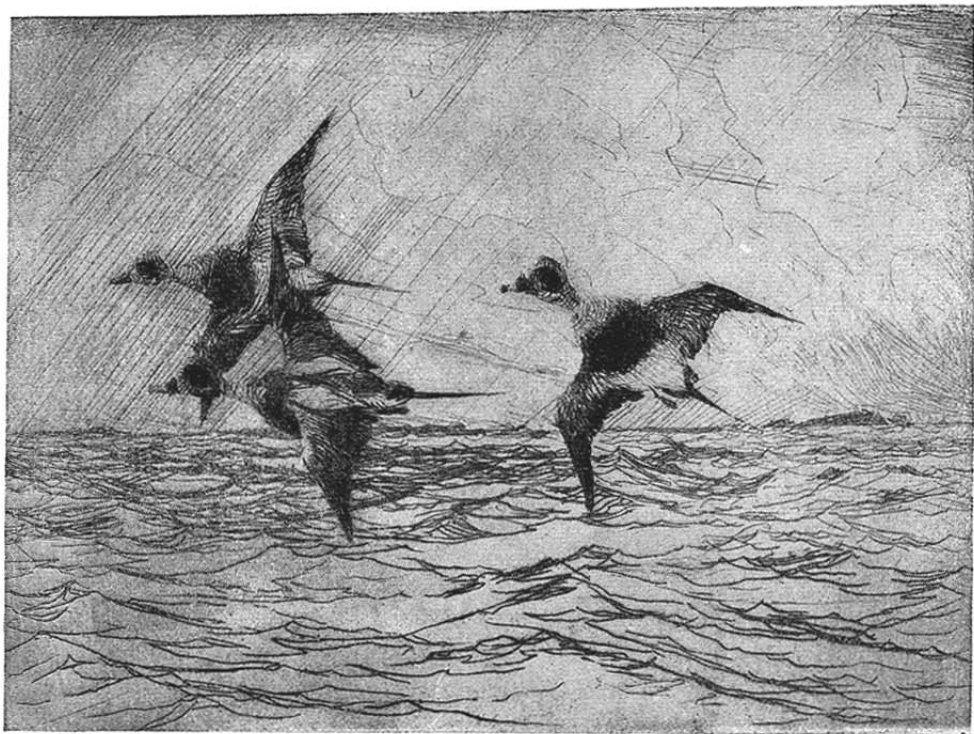


I CYPRESSI SUL PALATINO
E. Mazzoni-Zarini

#282



THE TURTLE
Troy Kinney



#27
OLD SQUAWS
Frank W. Benson



EVENING
Dwight C. Sturges

#248

SPACKMAN, CYRIL S.

- 239 The river
240 In the bay

STORRS, JOHN

- 241 Portrait of Mrs. S.
242 Self portrait

STUEVER, CELIA M.

- 243 Old street, Wurtenburg

STURGES, DWIGHT C.

- 244 River's edge
245 Fisherman of Gloucester
246 Edge of marshes, Essex
247 Help wanted
248 Evening (u# 9)
249 Cooper

STURGES, LEE

- 250 Street market
251 Sand dunes
252 Wistaria vine

TELLING, ELIZABETH

- 253 Miss Goode
254 Concecao
255 Portrait of G. S.

TALLMADGE, THOMAS EDDY

256 Woods at Saugatuck

THOMPSON, F. LESLIE

257 Twilight

258 Moonlight

259 Solitude

VARIAN, LESTER E.

260 Street in Florence

261 Western Chemical Co.

VONDROUS, J. C.

262 Murano

263 Bridge of Sighs

Sogau 75 264 Canal in Venice *u#5*

265 Houses on Arno, Florence

266 Seine boats, Gloucester

267 Shipyard, New York

268 Blacksmith shop

269 Mala Strana, Prague

WALKER, JESSIE A.

270 Old tree

271 Bagura

272 Mother and cubs

WEEDELL, HAZEL

273 Little town by the river

WENBAN, S. L.

274 October Fest, Bavaria

275 Stoeckert, Bavaria

WILKINS, MARGARET

276 Twilight

WILKINSON, J. E.

277 Temple of Diana

WINSLOW, HENRY

278 The accident

WOODWARD, STANLEY W.

279 Sand dunes of Essex

YEOMANS, WALTER C.

280 Sketch

ZARINI, E. MAZZONI

281 Romena

282 I cipressi sul Palatino (u#6)

283 Traghetto sul canal grande

LIST OF EXHIBITORS, MEMBERS OF THE
CHICAGO SOCIETY OF ETCHERS

Achener, Maurice	15 Ave. de Villars, Paris
Addams, Clifford	8 Meadway, Hendon, London
Armington, Frank M.	70 Boul. du Montparnasse, Paris
Armington, Caroline H.	70 Boul. du Montparnasse, Paris
Barone, Antonio	106 W. 55th St., New York
Benson, Frank W.	Salem, Mass.
Bicknell, W. H. W.	Winchester, Mass.
Bosworth, Winifred	Woodland, Elgin, Ill.
Bremond, Jean Louis	29 rue de l'Yvette, Paris
Breitmayer, M. V.	57 Baltimore, W., Detroit, Mich.
Burr, George E.	1825 Logan St., Denver
Calewaert, Louis	Rome
Crane, Donn P.	Republic Bldg., Chicago
Colwell, Elizabeth	1373 E. 57th St., Chicago
Congdon, T. R.	Salmagundi Club, New York
Cotton, John W.	327 Huron St., Toronto
Dodge, Ozias	Norwich, Conn.
Eskridge, Robert L.	225 E. Huron St., Chicago
Gallagher, Sears	486 Boylston St., Boston
Garrett, Theresa A.	58 E. Washington St., Chicago
Getchell, Edith Loring	6 Linden St., Worcester
Gleeson, C. K.	4518 Cote Brilliante Ave., St. Louis
Goetsch, Gustav F.	Institute of Fine Arts, Minneapolis
Goldthwaite, Anne	35 W. 10th St., New York
Griffith, Louis O.	7648 Oglesby Ave., Chicago
Hammersmith, Paul	Milwaukee
Hornby, Lester G.	Pawtucket, R. I.
Hyde, Helen	53 W. North Ave., Chicago
Jaques, Bertha E.	4316 Greenwood Ave., Chicago
Jung, C. Jac.	908 Malone St., W. Hoboken, N. J.
Kinney, Troy	67 W. 67th St., New York
Larsen, Charles P.	1540 E. 57th St., Chicago
Leach, Bernard	Tokyo, Japan
Leich, Chester	1548 E. 57th St., Chicago
Lemos, Pedro J.	Institute of Art, San Francisco, Cal.
Lester, W. M.	227 W. 12th St., New York

Levy, W. A.	45 E. 34th St , New York
Levy, Beatrice S.	6040 Drexel Ave., Chicago
Lewis, Allen	1232 Fulton St., Brooklyn, N. Y.
Lindborg, Ingeborg A.	Stockholm
Little, Philip	Salem, Mass.
Marschener, Arthur A.	Fine Arts Bldg., Detroit
Merrill, Katharine	42 Washington Sq., S. New York
Millhau, Zella de	58 W. 45th St., New York
Partridge, Roy	1117 Terry Ave., Seattle
Paulus, Francis P.	14 W. Adams Ave., Detroit
Quinlan, Will J.	51 W. 10th St., New York
Reed, Earl H.	4758 Lake Park Ave., Chicago
Reindel, W. G.	Euclid, O.
Roche, M. Paul	325 Kingston Ave., Brooklyn, N. Y.
Roth, Ernest D.	232 W. 14th St., New York
Senseney, George	22 Provincetown, Mass.
Seymour, Ralph Fletcher	Fine Arts Bldg., Chicago
Schneider, Otto J.	1259 Thorndale Ave., Chicago
Shope, Henry B.	40 W. 59th St., New York
Sloan, J. Blanding	1540 E. 57th St., Chicago
Spackman, Cyril S.	London
Storrs, John	109 rue du Cherche Midi, Paris
Stuever, Celia M.	3444 Russell Ave , St. Louis
Sturges, Dwight C.	Melrose, Mass.
Sturges, Lee	Elmhurst, Ill.
Tallmadge, Thomas E.	Security Bldg., Chicago
Thompson, F. Leslie	4730 N. Sawyer Ave., Chicago
Vondrous, J. C.	179 E. 79th St., New York
Walker, Jessie A.	Paris
Winslow, Henry	10 Fitzroy St., London
Woodward, Stanley W.	121 N. 21st St., Philadelphia
Yeomans, Walter C.	1841 Michigan Ave , Chicago
Zarini, E. Mazzoni	Florence

EXHIBITORS NOT MEMBERS OF THE
CHICAGO SOCIETY OF ETCHERS

Arms, John Taylor	55 Willow St., Brooklyn
Bailey, Henry Lewis	626 S. Spring St., Los Angeles
Brown, Benjamin C.	120 N. El Molino Ave., Pasadena
Buller, Cecil T.	196 Dartmouth St., Boston
Clark, Alston S.	596 Oak St., Winnetka, Ill.
Colson, Frank V.	98 Everett St., Boston
Cordoba, Mathilde de	77 E. 89th St., New York
Dey, Mukul Chandra	Calcutta, India
Doolittle, H. L.	127 N. Catalina Ave., Pasadena
Fiske, Gertrude	194 Clarendon St., Boston
Garrett, Edmund H.	110 Tremont St., Boston
Greenberg, Morris	1006 Flushing Ave., Brooklyn
Hassam, Childe	4 E. 39th St., New York
Hewitt, Edward S.	597 5th Ave., New York
Higgins, Eugene	411 E. 61st St., New York
Hoffman, Gustav A.	Rockville, Conn.
Jopling, F. W.	Toronto
Kaminski, A.	Poland
Lewis, Martin	51 W. 37th St., New York
Modjeska, Marylka	1216 Astor St., Chicago
Murphy, John J. A.	196 Dartmouth St., Boston
Nuytens, J. P.	Fine Arts Bldg., Chicago
O'Connor, Henry	58 Putnam Ave., Cambridge, Mass.
Rogers, John A.	Daytona, Fla.
Ryerson, Margery A.	345 W. 57th St., New York
Selden, Henry Bill	313 Pequot Ave., New London, Conn.
Smith, J. Andre	2255 Broadway, New York
Telling, Elisabeth	2120 Lincoln Park W., Chicago
Varian, Lester E.	Denver
Weedell, Hazel E.	201 N. Kenwood Ave., Austin, Minn.
Wenban, S. L.	Rockville, Conn.
Wilkins, Margaret	31 Devon Road, Newton Center, Mass.
Wilkinson, J. E.	6 N. Clark St., Chicago

The Libby Company, Printers
Chicago