

CATALOGUE

58th Annual Exhibition • ARTISTS OF CHICAGO AND VICINITY • June 2nd through July 4th, 1955 • The Art Institute of Chicago

JURY OF THE EXHIBITION

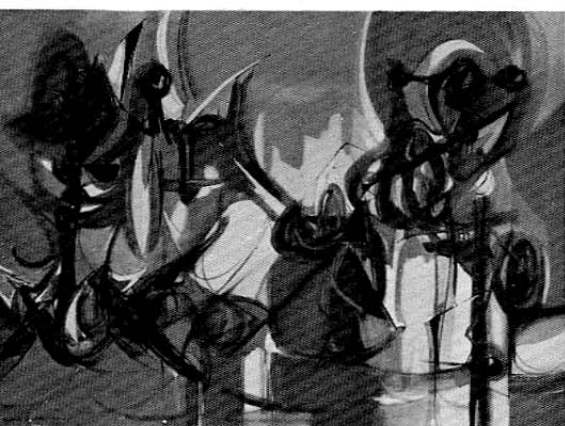
EDMUND D. LEWANDOWSKI
painter; Director, Layton School of Art,
Milwaukee

LESTER D. LONGMAN
Head, Department of Art,
State University of Iowa, Iowa City

EZIO MARTINELLI
painter and printmaker, New York City

| | | |
|---------------------------|---|-------|
| GERTRUDE ABERCROMBIE | | |
| 1 | Split Personality, <i>oil</i> | 125 |
| RONALD AHLSTROM | | |
| 2 | Portrait of a Lady, <i>oil</i> | 100 |
| IVAN LE LORRAINE ALBRIGHT | | |
| 3 | Calcification, <i>oil</i> Lent by Mr. Richard Riccardo, <i>Chicago</i> | |
| 4 | We Are Gathered Here, <i>watercolor</i> Lent by C. M. Varde, Kenilworth | |
| FRANZ ALTSCHULER | | |
| 5 | Bull, <i>watercolor</i> | 50 |
| JAMES ASELTINE | | |
| 6 | Dancers, <i>oil</i> | 150 |
| BARBARA AUBIN | | |
| 7 | Prelude to the Big Blow, <i>watercolor</i> | 125 |
| PHIL AUSTIN | | |
| 8 | Prelude, <i>watercolor</i> | 100 |
| ANNA P. BAKER | | |
| 9 | Cartographic Species, <i>oil</i> | 400 |
| 10 | Palimpsest, <i>lithograph</i> | 35 |
| LEAH BALSHAM | | |
| 11 | Murphy, <i>clay</i> | 125 |
| ELLIOTT BALTER | | |
| 12 | Dying Elephant, <i>bronze</i> | |
| NEIL BARRETT | | |
| 13 | Square Peg, <i>oil</i> | 150 |
| VERA TRAYFORD BARTLETT | | |
| 14 | Waiting, <i>oil</i> | |
| DON BAUM | | |
| 15 | Saint, <i>oil</i> | 350 |
| 16 | Spain, <i>oil</i> | 700 |
| AUGUST BECKER | | |
| 17 | Tom Figure, <i>oil</i> | 350 |
| 18 | Total Totem, <i>oil</i> Lent by Miss Virginia Yarbro, <i>Chicago</i> | |
| KENNETH PERRIN BECKER | | |
| 19 | Briery Gap, <i>drawing</i> Lent by Mr. and Mrs. Henry Regnery, Hinsdale | |
| 20 | Puffer Fish, <i>watercolor</i> | 175 |
| ANTIMO BENEDEUCE | | |
| 21 | Lake Chapala, Mexico, <i>watercolor</i> | 150 |
| 22 | San Miguel Allende, Mexico, <i>watercolor</i> | 225 |
| RAINEY BENNETT | | |
| 23 | The Boy, <i>watercolor</i> | 250 |
| CLAUDE BENTLEY | | |
| 24 | Ecstatic, <i>oil</i> | 1,200 |
| 25 | Lema, <i>oil</i> | 1,200 |
| CAROL BERNARD | | |
| 26 | Abraham and Isaac, <i>oil</i> | 350 |
| GERDA BERNSTEIN | | |
| 27 | Rooftops, <i>drawing</i> | 300 |
| JACK B. BEVIER | | |
| 28 | Backyard, <i>Chicago, oil</i> | 250 |
| IRENE BINFORD | | |
| 29 | The Red Door, <i>watercolor and ink</i> | 100 |
| HARRY F. BREEN | | |
| 30 | A Portrait of Juno, <i>oil</i> | 125 |
| 31 | Diane with Child: The Artist's Wife, <i>oil</i> | |
| RAYMOND BREININ | | |
| 32 | Approaching the Sea, <i>oil</i> | 1,200 |
| 33 | Head of Christ, <i>metalized hydrostone</i> | 1,500 |

- HARRY BRORBY
34 Icarus, *etching* 60
- CLARICE M. CAMPBELL
35 Still Life, *oil* 50
- NATHAN S. CAPLOW
36 Composition No. 12 — Urban, *watercolor* 100
- ALFONSO A. CASTRICONE
37 Composition No. 7, The City, *oil* 2,000
38 Composition No. 19, The Cave, *oil* 1,200



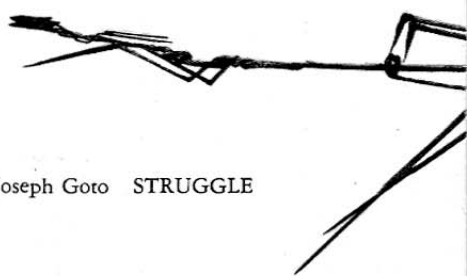
25 Claude Bentley LEMA

- EDOUARD CHASSAING
39 Wart Hog, *iron*
Lent by Mrs. Borden Stevenson, Chicago
- BARBARA JEAN COCHRAN
40 Still Life, *oil* 100
- CONSTANCE TEANDER COHEN
41 Bathers, *oil* 300
- DAVID T. CORSON
42 Vestige, *oil* 250
- DOUGLAS D. CRAFT
43 Study in Red, *oil* 300
- JOHN G. CURTIS, JR.
44 Slave Girl, *charcoal*
Lent by Mr. Michael Shraegar
- CAROLYN DAVIS
45 Birthday Party, *oil* 50
- ERNEST DREYFUSS
46 The Door, *oil* 300
- BRIGGS DYER
47 Ancient Practice, *oil and tempera* 550
- PAUL EDWARDS
48 Blue Island, *watercolor* 200
- JOHN W. EKSTROM
49 Still Life, *lacquer* 175
- ELLIOT ELGART
50 Pregnant Woman, *oil drawing* 90
51 The Table, *oil and lacquer* 350
- ELIZABETH ENGELHARD
52 Potentials, *oil* 400
- JOHN FABION
53 The Bridge, *oil* 750
- RICHARD A. FLORSHEIM
54 Cactus, *lithograph* 20
- RUTH VAN SICKLE FORD
55 Cathedral, Puebla, Mexico, *watercolor* 300
- TOM S. FRICANO
56 Kiss in Flight, *color woodcut* 50

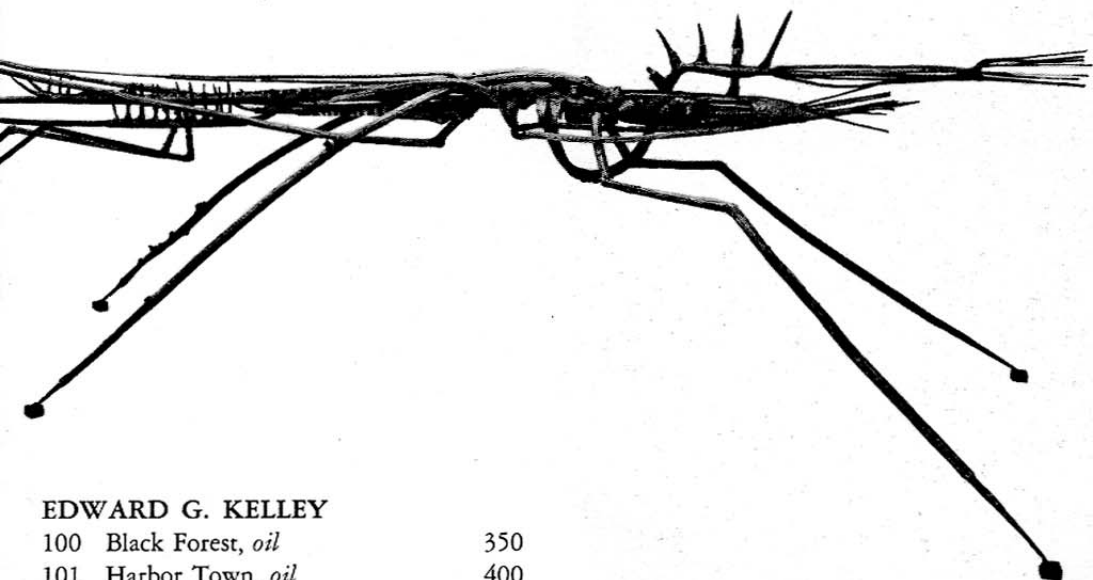
- W. GALLAGHER
57 Ponderosa, *oil* 200
- HENRY GAMSON
57a The Son of Nun, *hammered lead*
Lent by Mr. and Mrs. Abel Fagen,
Lake Forest
- GARADA
58 Carnival, *oil* 200
59 Juggler, *oil and casein* 150
- RUTH GARDESCU
60 We Three, *limestone* 900
- MARY GEHR
61 The Balloon Booth, *oil* 200
62 Surrounded, *oil* 150
- PAULA GERARD
63 Figure Drawing, *silverpoint* 50
- ROLAND GINZEL
64 March 10th, *oil*
- DENISE GIRAUD
65 Three Figures, *oil* 125
- LEON GOLUB
66 The Prodigal Sphinx, *oil* 800
- SI GORDON
67 Young Family, *bronze* 875
- WILLIAM J. GORDON
68 Sibyl, *oil* 500
- JOSEPH GOTO
69 Struggle, *welded steel*
- THEODORE HALKIN
70 Man with Birds, *mixed medium*
- BETTY HALL
71 Rocky Place, *casein* 85
- E. HARMS-CRAFT
72 Adobe City, *plastic* 200
- MAX HAYSLETTE
73 Source of Power, *watercolor*
Lent by Mr. Ken Johnson, Chicago

69 Joseph Goto STRUGGLE

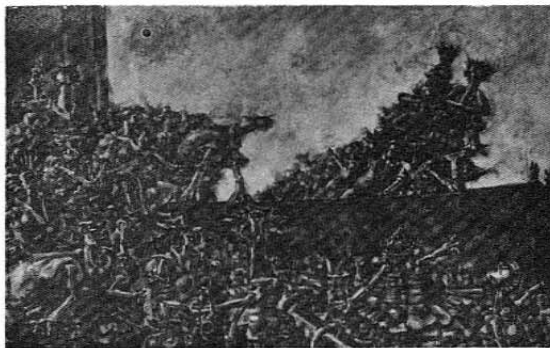
- EVELYN F. HESTER
74 The Mountain, *watercolor and ink* 100
- KALMAN EDWARD HIMMEL
75 Composition Theme, *oil* 500
- CATHERINE HINKLE
76 Journey, *oil* 400
- FERDINAND L. HOTZ
77 Winter on Waterfront, *oil* 150
- H. WINSTON HOUGH
78 Near Navy Pier, *watercolor* 100
- RICHARD HUNT
79 Two Figure Sculpture, *soldered metal* 90
- NOYES HUSTON
80 Approaching Storm, *oil* 250



| | | | |
|-----------------------------|--|-------|--|
| WILLIAM JACKMAN | | | |
| 81 | Figure No. 1, <i>oil</i> | 200 | |
| VALERIE C. JACOBS | | | |
| 82 | Composition in Blue, <i>oil</i> | 400 | |
| 83 | Harvest, <i>oil</i> | 350 | |
| WILLIAM JACOBS | | | |
| 84 | Night, <i>oil</i> | 500 | |
| CECILE RYDEN JOHNSON | | | |
| 85 | Patterns, <i>watercolor</i> | 100 | |
| CARL E. JONES | | | |
| 86 | Man or Beast, <i>oil</i> | | |
| ELSIE JONES | | | |
| 87 | Dusk, <i>oil</i> | 400 | |
| 88 | Fishing Village, <i>oil</i> | 500 | |
| GILDA C. JONES | | | |
| 89 | Still Life, <i>oil</i> | 200 | |
| SYLVIA SHAW JUDSON | | | |
| 90 | Adolescent, <i>bronze</i> | 1,250 | |
| JOHN ALBERT JURGENS | | | |
| 91 | The Scavenger, <i>oil</i> | 800 | |
| JOSHUA KAGANOVE | | | |
| 92 | Lincoln Park Extension, <i>oil</i> | 100 | |
| MAX KAHN | | | |
| 93 | The Fountain, <i>oil</i> | 1,500 | |
| THOMAS H. KAPSALIS | | | |
| 94 | Figure, <i>bronze</i> | 600 | |
| 95 | Island, <i>oil and enamel</i> | 150 | |
| SUSAN J. KARSTROM | | | |
| 96 | Bare Aspens in Aspen, Colorado, <i>watercolor and ink</i> | 100 | |
| RICHARD KEANE | | | |
| 97 | Three Birds, <i>oil</i> | 125 | |
| A. KEARNS | | | |
| 98 | Finale, Paris, <i>oil</i> | 250 | |
| 99 | Last Act, <i>oil</i> | 400 | |
| MISCH KOHN | | | |
| 108 | Kabuki Samurai, <i>wood engraving</i> | 75 | |
| RICHARD KOPPE | | | |
| 109 | Marine Theme, <i>oil</i> | 500 | |
| 110 | Phosphorescent, <i>oil</i> | 1,500 | |
| ULDIS KRUMINS | | | |
| 111 | Composition No. 2, <i>oil</i> | 200 | |
| ROBERT E. KUENNEN | | | |
| 112 | Heroic Figure, <i>bronze</i> | 500 | |
| DAVID LANDIS | | | |
| 113 | Carnival of Carmen, <i>oil</i> | 500 | |
| ELLEN LANYON | | | |
| 114 | Rock River, <i>egg tempera and metal leaf</i> | 600 | |
| 115 | Structure No. 1, <i>egg tempera</i> | 300 | |
| WILLIAM B. LAURIE | | | |
| 116 | Venezia, <i>oil</i> | 575 | |
| CAROLINE N. LEE | | | |
| 117 | Untitled, <i>oil</i> | 100 | |
| JANICE LEFTON | | | |
| 118 | The Decalogue, <i>oil</i> | 1,000 | |
| LUCILE LEIGHTON | | | |
| 119 | Caryatides No. 5, <i>oil and enamel</i> | 350 | |
| ARTHUR LEVINE | | | |
| 120 | Still Life II, <i>oil and lacquer</i> | 400 | |
| ROBERT LIFVENDAHL | | | |
| 121 | Model in Studio, <i>oil</i> | 300 | |
| KAY METZGER LOVELACE | | | |
| 122 | Rocky Glen, <i>watercolor</i> | 150 | |
| FRED W. LOWE | | | |
| 123 | For Ever and Ever and Ever, <i>oil</i> | 125 | |
| RAYMOND L. MARTIN | | | |
| 124 | Still Life No. 40, <i>oil</i> | 400 | |
| MARTYL | | | |
| 125 | Afternoon in Lisbon, <i>oil</i> | 750 | |
| 126 | Snow, Santa Fe, <i>oil</i> | | |



| | | | |
|-----------------------------|---|-----|--|
| EDWARD G. KELLEY | | | |
| 100 | Black Forest, <i>oil</i> | 350 | |
| 101 | Harbor Town, <i>oil</i> | 400 | |
| F. W. KENNISTON | | | |
| 102 | River's Bank, <i>oil</i> | 250 | |
| ATSUSHI KIKUCHI | | | |
| 103 | City Alley, <i>watercolor</i> | 100 | |
| 104 | City, <i>watercolor</i> | 125 | |
| CHARLES P. KILLGORE | | | |
| 105 | A Place in the Sun, <i>oil</i> | 700 | |
| REGINA KIRSCHNER | | | |
| 106 | Composition I, <i>oil</i> | 250 | |
| 107 | Composition II, <i>oil</i> | 250 | |
| ALICE MASON | | | |
| 127 | Late Winter, <i>watercolor and casein</i> | 100 | |
| GERALD W. McLAUGHLIN | | | |
| 128 | The Fighters, <i>oil</i> | 400 | |
| 129 | The Orator and the Ladies, <i>oil</i> | 750 | |
| FRANKLIN McMAHON | | | |
| 130 | The Passersby II, <i>encaustic</i> | 350 | |

| | | |
|--|-------|--|
| EVERETT McNEAR | | |
| 131 Landscape, <i>oil</i> | 250 | |
| JOHN D. McNEE, JR. | | |
| 132 The Good Life, <i>oil</i> | 500 | |
| 133 Still Life, <i>oil</i> | 350 | |
| TRISTAN MEINECKE | | |
| 134 Paintscape No. 19, <i>oil</i> | 1,200 | |
| JOHN F. MILLER | | |
| 135 Painting, <i>oil</i> | 300 | |
| FRANCIS MINNICK | | |
| 136 February, 1955, <i>oil</i> | 600 | |
| HARRY MINTZ | | |
| 137 Altar No. 15, <i>oil</i> | 1,000 | |
| 138 Metropolis, <i>oil</i> | 1,000 | |
| DOW MITCHELL | | |
| 139 Paranoic Statement, <i>plastic intaglio</i> | 45 | |
| STANLEY MITRUK | | |
| 140 Wire Egg Basket and Tureen, <i>oil</i> | 450 | |
| 141 Dry Leaves, <i>tempera</i> | 300 | |
| ROBERT NATKIN | | |
| 142 Climb in August, <i>oil</i> | 300 | |
| LEROY NEIMAN | | |
| 143 Homage to Tintoretto, <i>oil</i> | 350 | |
| 144 Fisherman, <i>oil</i> | 350 | |
| THURMAN NICHOLSON | | |
| 145 The Sonnambulists, <i>casein</i> Lent by S. L. Schwartz & Company, Chicago | | |
| ROBERT NORTH | | |
| 146 Multipositional Octahedroid, <i>plastic aluminum</i> | 685 | |
| EOINA NUDELMAN | | |
| 147 Reclining Figure, <i>bronze</i> | 700 | |
| FORMAN ONDERDONK | | |
| 148 Group, <i>oil</i> | 150 | |
| EFREM OSTROWSKY | | |
| 149 Monsieur P., <i>oil</i> | 200 | |
| 150 Self-Portrait, <i>plaster</i> | | |
| DAN PALUMBO | | |
| 151 Street Scene, <i>oil</i> | 300 | |
| JOHN WILLIAM PARKER | | |
| 152 Paris Green, Place Dauphine, <i>oil</i> | 450 | |
| ABBOTT PATTISON | | |
| 153 The Dynasty, <i>brazed steel and brass</i> | 800 | |
| 154 Enclosed Figure, <i>brazed copper</i> | 900 | |
| RUDOLPH PEN | | |
| 155 Composition, <i>watercolor</i> | 350 | |
| PHILIP PERKINS, JR. | | |
| 156 The Net, <i>oil</i> | 250 | |
| 157 On the Beach, <i>oil</i> | 275 | |
| FRANK PERRI | | |
| 158 Past Glory, <i>oil</i> | 300 | |
| VIKTORAS A. PETRAVICIUS | | |
| 159 The Three Wise Men, <i>oil</i> | 600 | |
| JERRY PINSLER | | |
| 160 Alton from the I. C., <i>oil</i> | 600 | |
| 161 In the City, <i>oil</i> | 650 | |
| JEAN PLAUT | | |
| 162 Nesting Birds, <i>oil</i> | 75 | |
| CONSTANTINE POUGIALIS | | |
| 163 Mother and Child, <i>oil</i> | 1,500 | |
| RICHARD E. PULLIAM | | |
| 164 Dead Mackerel Shining and Stinking in the Moonlight, <i>encaustic</i> | 200 | |
| RALPH RADDATZ | | |
| 165 Harbor, <i>oil</i> Lent by Dote Schulz Raddatz | | |
| THOMAS LLOYD RAMSIER | | |
| 166 Composition for You, <i>watercolor</i> | 200 | |
| JOHN H. RASMUSSEN | | |
| 167 Reclining Figure, <i>limestone</i> | 350 | |
| BEATRICE T. RAYMOND | | |
| 168 Beechette, <i>etching</i> | 50 | |
| CHARLES REDDINGTON | | |
| 169 The Catalinas, <i>watercolor</i> | 60 | |
| GEORGE ROCHELEAU | | |
| 170 Composition, <i>oil</i> | 300 | |
| ANN ROMAN | | |
| 171 The Watch, <i>watercolor</i> | 100 | |
| 172 Study, <i>oil</i> | 200 | |
| AARON H. ROSEMAN | | |
| 173 The Bull Ring, <i>intaglio</i> | 65 | |
| SEYMOUR ROSOFSKY | | |
| 174 Nevada Mountain, <i>oil</i> | 400 | |
| 175 Young Woman, <i>oil</i> | 400 | |
|  | | |
| 129 Gerald McLaughlin THE ORATOR AND THE LADIES | | |
| RENEE ROTHBEIN | | |
| 176 Still Life, <i>oil</i> | 150 | |
| JANET MAAS SATZ | | |
| 177 Saturday Matinee, <i>oil</i> | 125 | |
| PEGGY ESKO SCHAPS | | |
| 178 Venice by Moonlight, <i>casein, opaque watercolor</i> | 200 | |
| ROBERT F. SCHUENKE | | |
| 179 Hoc Est Enim Corpus Meum, <i>encaustic</i> | 500 | |
| WILLIAM S. SCHWARTZ | | |
| 180 Portraits in Lava, <i>oil</i> | 850 | |
| WILLIAM T. SEAY | | |
| 181 The City, <i>watercolor</i> | 150 | |
| LEOPOLD SEGEDIN | | |
| 182 Sax Man, <i>oil</i> | 250 | |
| 183 Tower of Babel, <i>oil</i> | 300 | |
| DAVID SEGEL | | |
| 184 Youth, Growth and Knowledge, <i>oil</i> | 175 | |
| DONALD SEIDEN | | |
| 185 Portrait of Judy, <i>plaster</i> | 450 | |
| ALICE SHADDLE | | |
| 186 The Red Bulb, <i>oil</i> | 100 | |
| SHOSHANNAH | | |
| 187 The Brothers, <i>oil</i> | 275 | |
| 188 Father and Son, <i>oil</i> | 300 | |
| RUFINO SILVA | | |
| 189 Traicion, <i>oil</i> | 800 | |

| | | |
|-------------------------------|---|-------|
| BARBARA SINCLAIR | | |
| 190 | Cable Court, <i>color etching</i> | 40 |
| DROSSOS P. SKYLLAS | | |
| 191 | Blue Kiosk, <i>oil</i> | 650 |
| WALTER SOWIZDRZAL, JR. | | |
| 192 | Ominous, <i>intaglio</i> | 20 |
| NANCY R. STABLEFORD | | |
| 193 | Harvest Fields, <i>oil</i> | 100 |
| LOUISE STANTON | | |
| 194 | Aspen Grove, <i>oil</i> | 300 |
| EDWARD A. STASACK | | |
| 195 | Portrait, <i>oil</i> | 300 |
| 196 | Reason, <i>intaglio</i> | 30 |
| JOHN TALLEUR | | |
| 197 | Consummatum Est, <i>intaglio</i> | 40 |
| 198 | Resurrection, <i>oil</i> | 250 |
| RAYMOND A. TOLOCZKO | | |
| 199 | Dearborn Street Station, <i>oil</i> | 200 |
| 200 | Garden Sculpture, <i>oil</i> | 300 |
| JOYCE TREIMAN | | |
| 201 | Figures (and, in) Landscape, <i>oil</i> | 400 |
| MICHAEL M. URSULESCU | | |
| 202 | Arrangement by the Sea, <i>watercolor</i> | 250 |
| 203 | View of Cagnes, <i>oil</i> | 1,000 |
| RALPH VON LEHMEN | | |
| 204 | Sun to, <i>oil</i> | |
| PAUL WAGENER | | |
| 205 | Miss Donna Whitaker, <i>pencil</i> | 50 |
| JAMES F. WALKER | | |
| 206 | Portrait, <i>drawing</i> | 175 |
| PATRICIA K. WATTERS | | |
| 207 | Pia Mater, <i>yellow pine</i> | 850 |
| PAUL WIEGHARDT | | |
| 208 | Brown Interior, <i>oil</i> | 700 |
| 209 | Daho, <i>tempera</i> | 120 |
| LINDA WILLARD | | |
| 210 | Claire, <i>oil</i> | |
| 211 | Dragon Hunter, <i>oil</i> | 150 |
| JAN WILLS | | |
| 212 | Slough, <i>oil</i> | 400 |
| MARIAN WITT | | |
| 213 | Arrangement, <i>oil</i> | 100 |
| DOROTHY WOLF | | |
| 214 | Standing Figure, <i>terra cotta</i> | |
| WILL WOOLWAY | | |
| 215 | The Blue Table, <i>oil</i> | 200 |
| CARL YATES | | |
| 216 | Image, <i>oil</i> | 200 |
| 217 | Watermelon Patch, <i>oil</i> | 150 |
| ALEX F. YAWORSKI | | |
| 218 | San Juan Market, <i>watercolor</i> | 200 |
| RAYMOND K. YOSHIDA | | |
| 219 | Figure, <i>oil on paper</i> | 125 |
| ZEKE ZINER | | |
| 220 | Youngster, <i>oil</i> | 300 |
| 221 | Youngster, <i>block print</i> | 50 |
| NICOLA ZIROLI | | |
| 222 | Pedestrian, <i>oil</i> | 1,000 |
| 223 | Weeds, <i>oil</i> | 1,000 |
| DAVID G. ZWICK | | |
| 224 | Ocean Street Boat House, <i>casein</i> | |
| 225 | Winter Color, <i>oil</i> | |

PRIZES

The Mr. and Mrs. Frank G. Logan Art Institute Medal and Prize of fifteen hundred dollars awarded by the jury to JOSEPH GOTO for his welded steel sculpture, *Struggle*.

The Mr. and Mrs. Frank G. Logan Art Institute Medal and Prize of one thousand dollars awarded by the jury to GERALD W. McLAUGHLIN for his oil painting, *The Orator and the Ladies*.

The Pauline Palmer Prize of seven hundred and fifty dollars for a painting. Awarded by the jury to CLAUDE BENTLEY for his oil painting, *Lema*.

The Pauline Palmer Prize of seven hundred and fifty dollars for sculpture. Awarded by the jury to RAYMOND BREININ for his metalized hydrostone, *Head of Christ*.

The Walter M. Campana Memorial Prize of seven hundred and fifty dollars awarded by the jury to AUGUST BECKER for his oil painting, *Tom Figure*.

The William H. Bartels Prize of five hundred dollars awarded by the jury to STANLEY MITRUK for his oil painting, *Wire Egg Basket and Tureen*.

The Mr. and Mrs. Frank H. Armstrong Prize of three hundred dollars awarded by the jury to ELLEN LANYON for her egg tempera and metal leaf painting, *Rock River*.

The Mr. and Mrs. Jule F. Brower Prize of three hundred dollars awarded by the jury to HARRY MINTZ for his oil painting, *Metropolis*.

The Pauline Palmer Prize of three hundred dollars for a work in any medium, awarded by the jury to RAYMOND A. TOLOCZKO for his oil painting, *Dearborn Street Station*.

The Broadus James Clarke Memorial Prize of two hundred dollars awarded by the jury to ZEKE ZINER for his oil painting, *Youngster*.

The Joseph N. Eisendrath Prize of two hundred dollars awarded by the jury to PHILIP PERKINS, JR. for his oil painting, *The Net*.

The Mr. and Mrs. Seymour Oppenheimer Purchase Prize of two hundred dollars awarded by the Curators of the Departments of Painting and Sculpture and Prints and Drawings to ROLAND GINZEL for his oil painting, *March 10th*.

The Town and Country Arts Club Prize of one hundred and fifty dollars awarded by the Art Institute to NICOLA ZIROLI for his oil painting, *Pedestrian*.

The Pauline Palmer Prize of one hundred and fifty dollars for a drawing. Awarded by the jury to JAMES F. WALKER for his drawing, *Portrait*.

The Pauline Palmer Prize of one hundred and fifty dollars for a print. Awarded by the jury to TOM S. FRICANO for his color woodcut, *Kiss in Flight*.

The Alumni Association of the School of the Art Institute of Chicago Prize of one hundred dollars awarded by the jury to RAYMOND MARTIN for his oil painting, *Still Life, No. 40*.

The Municipal Art League Prize of one hundred dollars awarded by a committee of the Municipal Art League to IVAN LE LORRAINE ALBRIGHT for his oil painting, *Calcification*.

The Clyde M. Carr Prize of one hundred dollars awarded by the jury to RONALD AHLSTROM for his oil painting, *Portrait of a Lady*.

The William and Bertha Clusmann Prize of one hundred dollars awarded by the jury to RUFINO SILVA for his oil painting, *Traicion*.

The Renaissance Prize of one hundred dollars awarded by the jury to JOHN TALEUR for his color intaglio, *Consummatum Est*.

The M. Singer and Sons Prize of one hundred dollars awarded by the jury to NANCY R. STABLEFORD for her oil painting, *Harvest Fields*.

The Robert Rice Jenkins Memorial Prize of fifty dollars awarded by the jury to ATSUSHI KIKUCHI for his watercolor, *City Alley*.



33 Raymond Breinin HEAD OF CHRIST

The prices of the works which are for sale are noted in the catalogue. Anyone wishing to make purchases should apply to the sales desk in Gallery G 55.

design
LYNN MARTIN
printing
NATHAN W. RUBEL AND CO.