

#4  
Catalogue of the Second Annual Exhibition

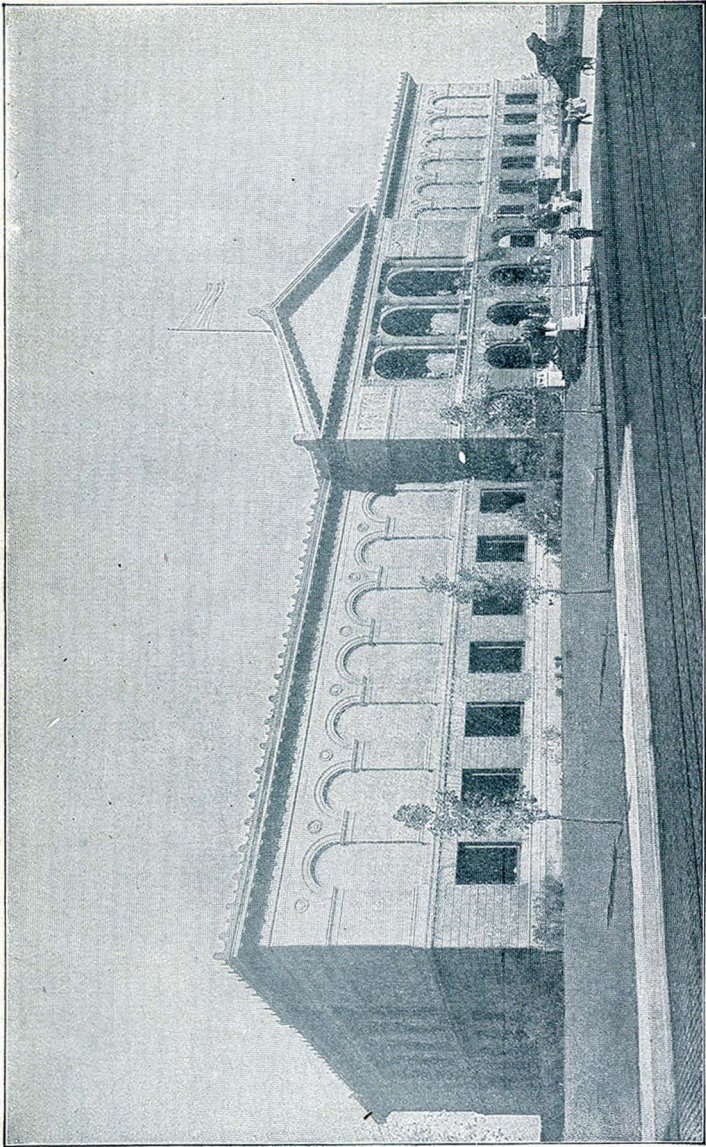
of

Original Designs for  
Decorations and  
Examples of Art  
Crafts *having* Distinct  
Artistic Merit



THE  
ART INSTITUTE OF CHICAGO

DECEMBER 3, 1903  
To DECEMBER 20, 1903



THE ART INSTITUTE.  
Lake Front, opposite Adams Street, Chicago.

THE ART INSTITUTE OF CHICAGO.

---

CATALOGUE

OF THE;

SECOND ANNUAL EXHIBITION OF ORIGINAL DESIGNS FOR DECORATIONS AND EXAMPLES OF ART CRAFTS HAVING DISTINCT ARTISTIC MERIT.

---

December 3, 1903, to December 20, 1903.

---

PRINTED FOR THE ART INSTITUTE, CHICAGO, 1903.

# TRUSTEES OF THE ART INSTITUTE OF CHICAGO

1903-1904

MARTIN A. RYERSON  
SAMUEL M. NICKERSON  
\* WILLIAM T. BAKER  
ADOLPHUS C. BARTLETT  
JOHN J. MITCHELL  
ALBERT A. SPRAGUE  
SAMUEL E. BARRETT  
CHAUNCEY J. BLAIR  
STANLEY MCCORMICK  
HENRY H. GETTY  
MARSHALL FIELD  
LAWRENCE E. MCGANN,  
City Comptroller, (*Ex-Officio*)

CHARLES D. HAMILL  
CHARLES A. COOLIDGE  
EDWARD E. AYER  
JOHN C. BLACK  
JOHN J. GLESSNER  
CHARLES L. HUTCHINSON  
BRYAN LATHROP  
R. HALL MCCORMICK  
CLARENCE BUCKINGHAM  
ARTHUR ORR  
CARTER H. HARRISON,  
Mayor (*Ex-Officio*)

---

## OFFICERS

CHARLES L. HUTCHINSON, <i>President</i>	MARTIN A. RYERSON, <i>Vice-President</i>
ERNEST A. HAMILL, <i>Treasurer</i>	WILLIAM A. ANGELL, <i>Auditor</i>
N. H. CARPENTER, <i>Secretary</i>	WILLIAM M. R. FRENCH, <i>Director</i>

---

## EXECUTIVE COMMITTEE

CHARLES L. HUTCHINSON	JOHN C. BLACK
ALBERT A. SPRAGUE	MARTIN A. RYERSON
CHARLES D. HAMILL	*WILLIAM T. BAKER
CLARENCE BUCKINGHAM	

---

## ART COMMITTEE

CHARLES L. HUTCHINSON	STANLEY MCCORMICK
MARTIN A. RYERSON	BRYAN LATHROP
HOWARD VAN D. SHAW	

---

\* Died Oct. 6, 1903.

**T**HE ART INSTITUTE OF CHICAGO was incorporated May 24, 1879, for the "founding and maintenance of schools of art and design, the formation and exhibition of collections of objects of art, and the cultivation and extension of the arts of design by any appropriate means." The Museum building upon the Lake Front, first occupied in 1893, is open to the public every week day from 9 to 5, Sundays from 1 to 5. Admission is free to members and their families at all times, and free to all upon Wednesdays, Saturdays and Sundays.

The Art School, in the same building, includes departments of Drawing, Painting, Sculpture, Decorative Designing and Architecture.

All friends of the Art Institute are invited to become members. Annual Members pay a fee of ten dollars for the year. Upon the payment of one hundred dollars annual members become Life Members and are thenceforth exempt from dues. Governing members pay one hundred dollars upon election and twenty-five dollars a year thereafter. Upon the payment of four hundred dollars governing members become Governing Life Members and are thenceforth exempt from dues. All receipts from Life memberships are invested and the income only expended.

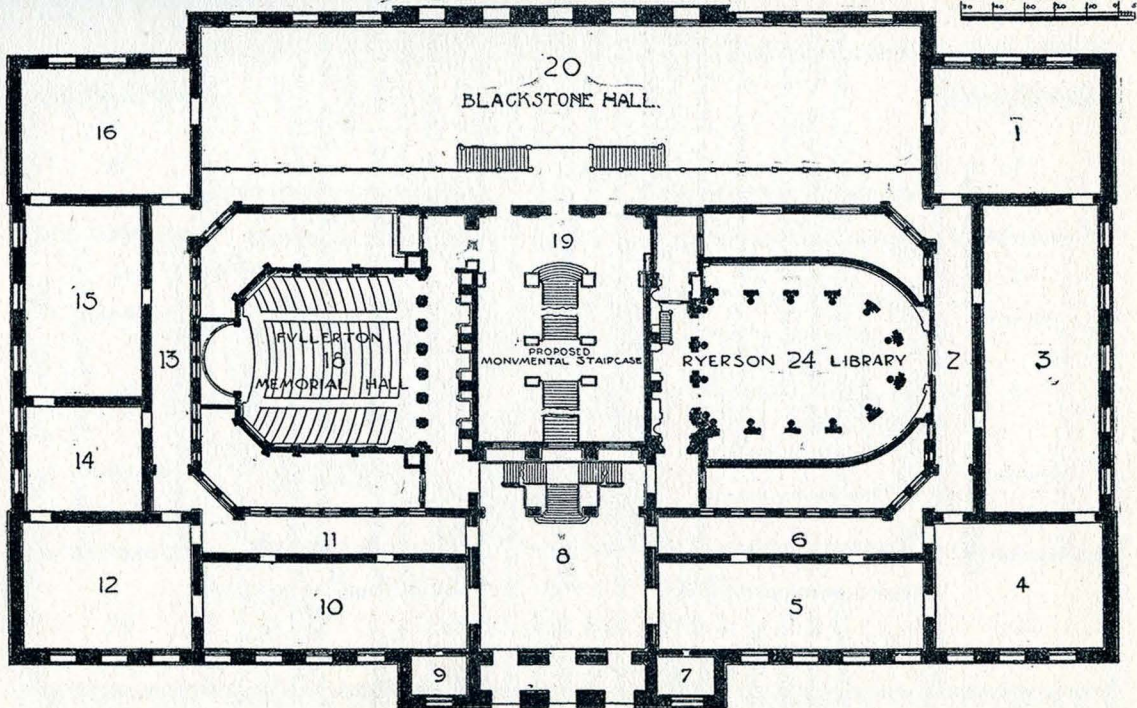
All members are entitled, with their families and visiting friends, to admission to all exhibitions, receptions, public lectures and entertainments given by the Art Institute, and to the use of the Ryerson reference library upon art.

## DESIGNATION OF GALLERIES

### MAIN FLOOR

SEE PLAN

- ROOMS 1, 2, 3, 4, 5, 8, 10, 12, 14, Elbridge G. Hall Collection of Casts of Sculpture.
- ROOM 1, Egyptian, Assyrian, Babylonian, Syrian, Asia Minor.
- ROOM 2, (Corridor) . . . Asia Minor and Early Greek.
- ROOM 3, Greek of V. and IV. Centuries B. C., including the Pheidian period and that of Praxiteles and Skopas.
- ROOM 4, . . . . Later Greek and Græco-Roman.
- ROOM 5, . . . . Sculpture, Roman.
- ROOM 6, (Corridor) Higinbotham Collection of Naples Bronzes.
- ROOM 7, . . . . Office of the Director.
- ROOM 8, (Hall) . . . . Sculpture, Modern.
- ROOM 9, . . . . Office of the Secretary.
- ROOM 10, . . . . Sculpture, Renaissance.
- ROOM 11, (Corridor) Historical Collection of French Sculpture.
- ROOM 12, . . . . Sculpture, Modern.
- ROOM 13, (Corridor) Getty Collection of Musical Instruments.
- ROOM 14, . . . . Sculpture, Modern.
- ROOM 15, . . . . Egyptian and Classical Antiquities.
- ROOM 16, . . . . Oil Paintings.
- ROOM 18, . . . . Fullerton Memorial Hall, Lecture Room.
- ROOM 20, . . . . Blackstone Collection of Architectural Casts.
- ROOM 24, . . . . Ryerson Library.



FIRST-FLOOR PLAN.

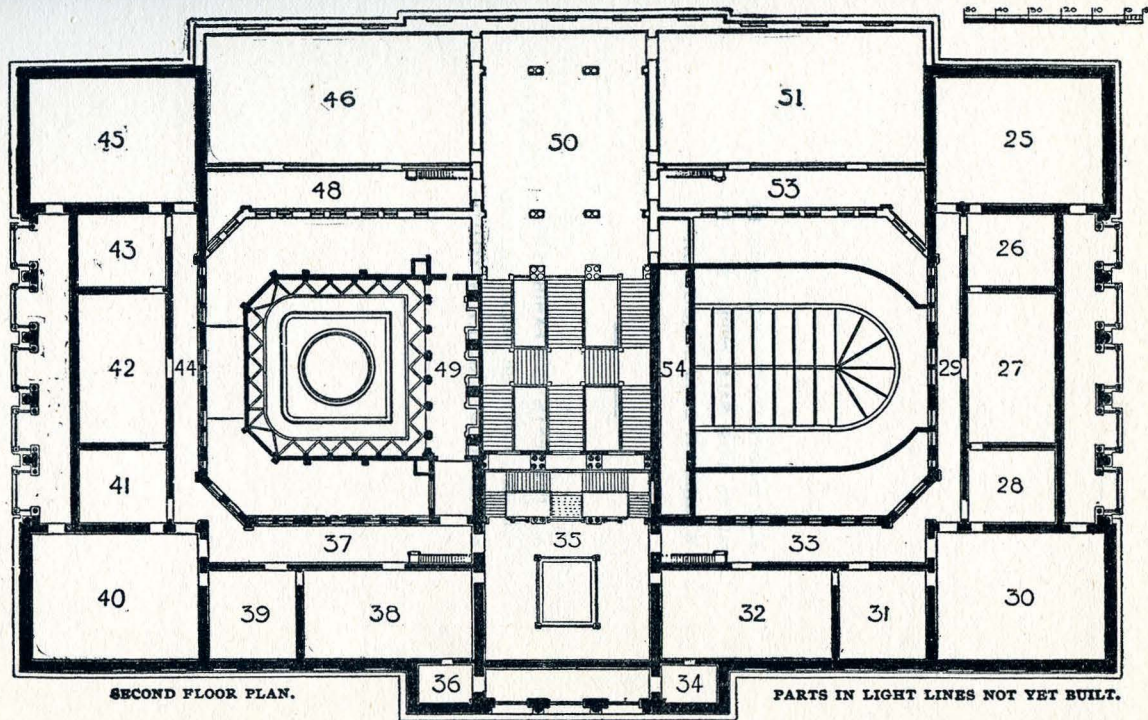
## DESIGNATION OF GALLERIES

### SECOND FLOOR

#### SEE PLAN

- ROOM 25, } Second Annual Exhibition of Original Designs  
ROOM 26, } for Decorations and Examples of Art  
ROOM 27, } Crafts having distinct artistic merit.
- ROOM 28, }  
ROOM 30, } Exhibition of the Works of Howard Pyle.
- ROOM 29, (Corridor) . . . . . Century Drawings.  
ROOM 31, . . . . . Oil Paintings.  
ROOM 32, . . . . . Paintings: Old Masters.  
ROOM 33, (Corridor) Arundel Reproductions and Metal Work.  
ROOM 34, . . . . . Trustees' Room.  
ROOM 35, (Hall) . . . . . Sculpture and Paintings.  
ROOM 36, . . . . . Committee Room.  
ROOM 37, (Corridor) . . . . . Sculpture and Drawings.  
ROOM 38, . . . Oil Paintings: Henry Field Memorial Collection.  
ROOM 39, The Elizabeth Hammond Stickney Room: Oil Paintings.  
ROOM 40, . . . Oil Paintings: A. A. Munger Collection.  
ROOM 41, Nickerson Collection: Japanese Bronzes, Porcelain, etc.  
ROOM 42, Nickerson Collection: Jades, Crystals, etc., and Oil  
Paintings.
- ROOM 44, Nickerson Collection: Water Colors and Engravings.  
ROOM 43, } Collection of the Antiquarians: Textiles, Embroideries,  
ROOM 45, } etc.
- ROOMS 46 to 54 are in the part not yet built.





FOR INFORMATION REGARDING EXHIBITS FOR SALE APPLY TO MISS WILLARD AT DESK IN ROOM 27.

---

ALL PAYMENTS FOR EXHIBITS PURCHASED MUST BE MADE TO THE SECRETARY OF THE ART INSTITUTE.

## JURY OF SELECTION

---

FREDRIK W. SANBERG,

MARY HESS BUEHR,

ARTHUR HEUN,

GEO. M. R. TWOSE,

LOUISE McD. GARDEN,

LILA WELLS SINCLAIR,

LOUIS J. MILLET.

## CATALOGUE.

---

**ALBEE, HELEN R.**—Designer and exhibitor; Pequaket, New Hampshire. Abnakee Rug Industry, makers.

1. Abnakee rug, Maidu Indian design.
2. Abnakee rug, Mexican design.

**ANDERSON, M. TERESA**—Maker and exhibitor; 1478 Graceland Avenue, Chicago, Ill.—Humphrey, Mrs. E. I., Designer.

3. Vase, China aster design.

**ANTISDEL, CLARENCE B.**—Exhibitor; 1143 South Hamlin Avenue, Chicago, Ill.—Natives of the Congo River, Africa, designers and craftworkers.

4. Cap of Chief, pineapple fibre, from Mukimvika.
5. Cap of Chief, pineapple fibre, from Mukimvika.
6. Skull cap, grass, from Mukimvika

**ART INSTITUTE OF CHICAGO**—Pottery Department. Exhibitor.

**DUDGEON, EDITH J.**—Designer, craftworker; 5918 Normal Avenue, Chicago, Ill.

7. Jar, royal blue and green.
8. Lamp bowl in crystal glaze, blue and green.

**ELLIOT, GERTRUDE**—Designer, craftworker; 269 Lathrop Avenue, River Forest, Ill.

9. Vase, Japanese coloring.

FAULKNER, SUSANNE — Designer, craftsworker; 98  
Oakwood Boulevard, Chicago, Ill.

10. Bowl.

MORTON, CORNELIA W.—Designer, craftsworker.

11. Tall vase, Japanese coloring.

12. Bowl.

SCOVEL, MARY C. — Designer and craftsworker; 305  
North Grove Avenue, Oak Park, Ill.

13. Jar, autumn tints.

VON OVEN, JOHANNA M. — Designer, craftsworker;  
Naperville, Ill.

14. Vase, Japanese blue and grey.

15. Jar.

16. Vase.

17. Vase.

18. Vase, green.

WEBB, JUDSON T.—Designer, craftsworker; 4121 Lake  
Avenue, Chicago, Ill.

19. Vase, mat glaze.

ATLAN CLUB—Exhibitor.

BAIRD, NANNIE B.—Designer, maker; 1010 East Eighth  
Street, Kansas City, Mo.

20. Coffee pot, Arabian design.

21. Stein, sprig design.

---

COFFMAN, GENEVIEVE SOUTHARD—Designer ; 3216  
Washington Street, Kansas City, Mo.

22. Punch bowl, sprig design.

COLE, LILLIE E.—Designer, maker; 3546 Ellis Avenue;  
Chicago, Ill.

23. Salad bowl.

DIBBLE, MABEL C.—Designer, maker ; 806 Marshall  
Field Building, Chicago, Ill.

24. Service plate.

FRAZEE, MRS. A. A.—Designer, maker; 1107 Auditorium  
Building, Chicago, Ill.

25. Lamp vase, design in lemons.

26. Bowl.

27. Chop platter.

FULLER, LURA WARD—Designer, maker ; 1225 Tracy  
Avenue, Kansas City, Mo.

28. Vase.

29. Vase, Persian motive.

30. Small box.

GERARD, LAURA S.—Designer, maker; 1321 East 22nd  
Street, Kansas City, Mo.

31. Celadon vase, Japanese cucumbers.

HUMPHREY, MRS. EDWARD L.—Designer, maker;  
1748 York Place, Chicago, Ill.

32. Lamp bowl—Pottery.
33. Low bowl, carved—Pottery.
34. Bouillon cup and saucer with cover.

MCDONALD, MINNA—Designer, maker; 3716 Wyandott  
Street, Kansas City, Mo.

35. Stein, pomegranate design.

MIDDLETON, MATILDA — Designer, maker; 1301  
Womans' Temple, Chicago, Ill.

36. Bowl.
37. Plate, octagon shaped.
38. Jug.

STEWART, MRS. LE ROY T.—Designer, maker; 3400  
Forest Avenue, Chicago, Ill.

39. Nut bowl—Pottery.
40. Olive dish—Pottery.
41. Plaque, poppy design—China.

TOPPING, HELEN M.—Designer, maker; 806 Marshall  
Field Building, Chicago, Ill.

42. Box.
43. Plate.

---

**ZEUBLIN, HENRIETTA C.**—Designer, maker; 38 Madison Park, Chicago, Ill.

44. Large bowl, conventional peacock border, laid in with enamels.

**BENNETT, B.**—Designer and exhibitor—Juergens and Andersen, makers.

45. Cuff links, gold and hyacinths.  
46. Cuff links, gold, opals and emeralds.  
47. Fob, gold and turquoise.  
48. Fob, silver and malachite with lapis lazuli.  
49. Coat buttons, silver and enamel.

**BEREA COTTAGE INDUSTRIES**—Designers, makers; exhibitor; Berea, Kentucky.

50. Spread, blue and white.  
51. Spread, blue and white.  
52. Spread, blue and white.  
53. Spread, red and white.  
54. Spread.

**BERRY, ALBERT and WILFRED**—Designers, craftworkers, exhibitors; Auburn, Rhode Island.

55. Inkstand in beaten copper, with glass well.

**BEVANS, VIVIAN**—Maker and exhibitor; 353 West 60th Place, Chicago, Ill. **JOHN DUNCAN**—Designer.

56. Decorative tile, "St. Francis blessing the birds."



BRACKEN, JULIA M.—Designer, modeller, exhibitor; 19 Studio Building, Chicago, Ill,

57. Mortuary urn—Bronze.

CARSON, JANE and BARNUM, FRANCES—Designers, crafts-workers, exhibitors; 260 Euclid Avenue, Cleveland, Ohio.

58. Pendant, silver and enamel, set with baroque pearls.
59. Pendant, silver and enamel, set with Mexican opals.
60. Pendant, silver, set with tourmaline and pearl blisters.
61. Pendant, silver, set with chalcedony and Mexican opals.
62. Pendant, silver, set with tourmaline and pearl blister.
63. Scarf pin, gold, set with emerald matrix.
64. Scarf pin, gold and enamel, set with Australian opal.
65. Fob charm, silver, set with Mexican opal matrix.
66. Brooch, silver and enamel, set with tourmaline.
67. Brooch, silver and enamel, set with Australian turquoise and pearl blister.
68. Brooch, gold and enamel, set with Australian opal and baroque pearl.
69. Brooch, silver and enamel (sunrise).

- 
70. Belt clasp, silver, set with chalcedony.  
Designed by Mildred Watkins.
  71. Belt clasp, silver and enamel.
  72. Belt clasp, silver and enamel, set with pearl blisters.
  73. Belt pin, silver and enamel, set with pearl blisters.
  74. Buckle, silver, set with Mexican opals.
  75. Buckle, silver and enamel.
  76. Buckle, silver and enamel.
  77. Salad set, silver and enamel.
  78. Salad set, silver and enamel.
  79. Tazza, silver and enamel, set with Mexican opals.
  80. Spoons, silver and enamel.
  81. Ladle and tongs, silver and enamel.
  82. Ladle, silver and enamel.
  83. Spoons, silver and enamel.  
Designed by Mildred Watkins.
  84. Salts and peppers, silver and enamel.
  85. Salt cups, silver and enamel (12).
  86. Salt cups, silver and enamel.
  87. Mirror, silver and enamel, set with opal.
  88. Mirror, silver and enamel, set with opal.
  89. Tray, silver, set with Mexican opals.

90. Box, copper, set with repoussé enamel panel.
91. Box, copper, set with repoussé enamel panel.
92. Box, silver, enamelled.
93. Box, silver, enamelled.
94. Letter opener, silver and enamel.
95. Letter opener, silver and enamel.
96. Paper cutter, silver and enamel.
97. Tray, copper, repoussé.
98. Tray, copper, repoussé.
99. Paper cutter, copper and enamel.
100. Paper cutter, copper and enamel.

**CHICAGO CERAMIC ART ASSOCIATION. Exhibitor.**

**BOYD, SUSIE, M.—Designer; maker; 3441 Rhodes Avenue, Chicago, Ill.**

101. Small salad bowl, conventional.

**JENKINS, MRS. VICTORIA—Designer; maker; 1106 Auditorium Tower, Chicago, Ill.**

102. Vase, thistle design.

**SCHWARZ, OTTILIE B.—Designer; maker; 840 Fine Arts Building, Chicago, Ill.**

103. Dinner plate.

---

WIGHT, BLANCHE LEA—Designer ; maker ; 103 Auditorium Building, Chicago, Ill.

- 104. Plate, conventional design.
- 105. Fruit plate, conventional design.
- 106. Plate, conventional design.
- 107. Chocolate pot.

CHASE, MRS. M. M.—Designer ; maker ; exhibitor ; 421 Fox Street, Aurora, Ill.

- 108. Bowl, burnt wood, stained, conventional design.

COTTELL, AMELIA C.—Designer ; exhibitor ; 2473 Lowell Avenue, Irving Park, Chicago, Ill.

- 109. Design for panel ; motif, arrow leaf lily.
- 110. Design for circle ; motif, squash vine.
- 111. Design for plate.

THE CRAFTERS—Exhibitor, 909 Steinway Hall, Chicago, Ill.

GAW, D'ARCY—Designer and craftsworker.

- 112. Electric light shade and fixture for desk.

MOWER, MARY—Designer and craftsworker.

- 113. Portière, linen, with appliqué and embroidery.

DEERFIELD SOCIETY OF BLUE & WHITE NEEDLE-  
work—Exhibitors, Deerfield, Mass.

MILLER, ELLEN—Designer.

114. Table cover, blue and green, "The Phoenix."  
Made by Minnie Billings.
115. Cross stitch on Russian crash, "Dooryard fowls."  
Made by Susan Everett.
116. Panel for screen, in blue and green, "Nocturne."  
Made by Ellen Miller and Emma Brown.
117. Table square, blue and white, "The fern leaf."  
Made by Ada Brown.
118. Table cover, in colors, "Prudence's Posy."  
Made by Ada Brown.

WHITING, MARGARET C.—Designer.

119. Cross stitch on Russian crash, "The terrace."  
Made by Frances Childs.
120. Table square, Kentucky homespun, "Milk weed pods."  
Made by Margaret C. Whiting.
121. Centerpiece, blue and white.
122. Two doilies.  
Made by Helen M. Stebbins.
123. Rose basket, centerpiece in colors.
124. Two doilies.  
Made by Eda M. Cadwell.

---

DICKSON, MABEL CONDÉ—Designer, craftsworker, exhibitor; 916 Fine Arts Building, Chicago, Ill.

- 125. Fob, oxidized silver.
- 126. Hat pin, with turquoise scarab, green gold on copper.

EATON, CHARLES FREDERICK, assisted by ROBERT WILSON HYDE, Guadalupe Buena, HENRY ROLAND JOHNSON and ALONZO SHAD—Designers, craftsworkers; Santa Barbara, California. Exhibited by CHARLES FREDERICK EATON.

- 127. Jewel chest.
- 128. Chest, with copper trimmings, for silver.
- 129. Lamp shade, peacock design, in iron and shell.
- 130. Lamp shade, brass and abalone.
- 131. Lamp shade, brass and pearl shell.
- 132. Lantern, iron.
- 133. Writing pad, burl.
- 134. Writing pad, leather.
- 135. Plaque, pomegranate design.
- 136. Saint's book rack, with design of saints.
- 137. Book rack, brass, with design in birds.
- 138. Wedding book, Aucassin and Nicolette.
- 139. Twenty-third Psalm.
- 140. Selection from Kipling.
- 141. Epistle of St. Paul.

142. Shakespeare's Sonnets.
143. Guest Book, sunflower design.
144. Guest Book, pomegranate design.
145. Guest Book, "Ye Ornament."
146. Guest Book, "Auld Lang Syne."
147. Photograph book.
148. Friendship book.
149. Friendship book.
150. Friendship book.
151. Friendship book.
152. Abalone sconce, copper.
153. Tea screen, rose design.
154. Tea screen, tree design.
155. Tea screen, diamond design.
156. Ash tray, brass.
157. Card case.
158. Card case.
159. Card case.
160. Card case.
161. Wedding book, orange flower.
162. Apocalypse.
163. Guest book, rose bower design.
164. Guest book, verbena design.
165. Mother's Song Baby book.
166. Family Record.

167. Guest book, multiflower design.
168. "In Memoriam."
169. Picture frame, tree design.
170. Picture frame, brass and shell.
171. Picture frame, copper and shell.
172. Card case.
173. Card case.
174. Card case.
175. Card case.

FOOTE, FLORENCE—Designer, craftsworker, exhibitor ;  
The Evelyn Nordhoff Bindery, 215 West 57th Street, New York, N. Y.

176. "Shakespeare's Sonnets."

(Published by University Press, Copeland & Day, Boston.)  
Bound in dark green crushed levant morocco, conventional  
design of curves and flowers with inlay of gray-blue leather,  
outside and inside of cover elaborately tooled and inlaid.

FREEMAN, EDITH EMOGENE—Designer, craftsworker,  
exhibitor ; 338 Wabash Avenue, Chicago, Ill.

177. Jardiniere, pottery.

FUOG, ELISE M.—Designer, craftsworker, exhibitor ; 916  
N. California Avenue, Chicago, Ill.

178. Collar and cuff basket.
179. Work basket, with cover.
180. Work basket.

GOODHUE, HARRY ELDREDGE—Designer, craftsworker,  
exhibitor ; 23 Church Street, Cambridge, Mass.

181. Design for aisle window, All Saints' Church,  
Brookline, Mass.



GOUDY, FRED W.—Designer. GOUDY, FRED W., and GOUDY, BERTHA M., craftworkers. THE VILLAGE PRESS, exhibitors, Park-Ridge, Ill.

182. Double title page drawing for "The Hollow Land," by Wm. Morris.
183. Initial letter "D," for "The Hollow Land," by William Morris.
184. Illustration, original drawing by Walter J. Enright for "The Hollow Land."
185. Original drawing for the "Village Type."

GRUEBY FAIENCE COMPANY—Exhibitors; Grueby Pottery, K and First Streets, Boston, Mass.

- |  |   |
|--|---|
| <p>186. Arms of Columbia College in Grueby Faience, to be used in decoration of New York Subway at 116th St.</p> | } Color and drawing by Grant La Farge; modeled by Lamer-eaux Elliott; W. H. Grueby, ceramist. |
| <p>187. Centre of plaque used in New York Subway, 59th St.</p>   |   |
| <p>188. Four other fragments of faience decoration, New York Subway.</p>   |   |
| <p>189. Four square tiles framed in bronze.</p>  |   |
| <p>190. Two small square tiles, framed in bronze.</p>  | } Tiles designed by Geo. P. Kendrick; executed by W. H. Grueby; frames by Louis Tiffany.      |

- 
191. Grueby oil lamp with leaded shade.  
Base designed by George P. Kendrick ; shade by Louis Tiffany ;  
modelled by Ruth Erickson.
192. Grueby oil lamp with paper shade.  
Designed and modelled by Ethel Grey.
193. Tall green vase.  
Designed by George P. Kendrick ; modelled by Kūchi Gamada.
194. Tall green vase with yellow buds, and alligator hide veinings.  
Designed by George P. Kendrick ; modelled by Axel Peterson.
195. Undecorated vase, of ivory color.  
Designed by George P. Kendrick ; thrown on wheel by Axel Peterson.
196. Vase, dark green, oriental form.  
Designed by George P. Kendrick ; modelled by Madeline Bartlett.
197. Green vase.  
Designed by George P. Kendrick ; modelled by Marie Seaman.
198. Jar, green color.  
Designed by George P. Kendrick ; modelled by Eva Russell.
199. Low bowl, plum colored.  
Designed by George P. Kendrick ; modelled by Wilhelmina Post.
200. Bowl, deep blue.  
Designed and modelled by Wilhelmina Post.
201. Bowl, grey blue.  
Designed and modelled by Marie Seaman.
202. Vase, grey blue, without ornament.  
Designed and modelled by Jenny Turner.
203. Grueby poster.  
Designed and modelled by Addison Le Boutillier.
204. Vase, green.
205. Vase.

THE HANDICRAFT SHOP—Designers, craftworkers, exhibitors; 1 Somerset Street, Boston, Mass.

- 206. Bowl, enamelled silver.
- 207. Bowl, enamelled silver.
- 208. Bowl, silver.
- 209. Bowl, silver.
- 210. Two salt cellars.
- 211. Tea strainer, tooled.
- 212. Mustard pot and spoon.
- 213. Olive pick.

HARTRATH, LUCIE—Designer, craftworker, exhibitor; Rockford College, Rockford, Ill.

- 214. Card case, embossed and stained leather.
- 215. Card case, stained leather and metal work.
- 216. Card case, embossed leather, oak leaf design.

HAZENPLUG, F., and COLAROSSO, A. G.—Designers, craftworkers, exhibitors; Hull House, Chicago, Ill.

- 217. Pendant, turquoise matrix set in silver.
- 218. Scarf pin, pearl, set in gold.
- 219. Hat pin.
- 220. Hat pin, enamelled.
- 221. Bowl, silver.
- 222. Spoon, silver.
- 223. Paper knife, silver and enamel.  
Exhibited by Ralph M. Fay, Esq.
- 224. Box, copper.  
Exhibited by Mrs. David B. Lyman, Jr.

---

HEUERMAN, MAGDA—Designer, exhibitor; 1016 Fine Arts Building, Chicago, Ill.; C. ROTHMULLER, maker.

225. Ring.

HULL HOUSE SHOP—Exhibitors; Chicago, Ill.

226. Box, copper, enamelled top.  
Designed and executed by Isadore Friedman.

227. Table cloth.  
Designed by John Duncan; executed by Needlework Guild.

228. Bureau scarf.  
Designed by John Duncan; executed by Needlework Guild.

229. Cloth, blue, homespun.  
Spun, dyed and woven in Labor Museum.  
Woven by Mrs. Olivetto.

230. Linen,  
Woven and spun in Labor Museum. Woven by Mrs Olivetto.

231. Bureau scarf.  
Executed by Mrs. Mortrude.

232. Scarf, woven and dyed.  
Executed by Mrs. Mortrude.

JARVIE, R. R.—Designer; TURNER BRASS WORKS and R. R. JARVIE—Makers; JARVIE, R. R.—Exhibitor; 608 West Congress Street, Chicago, Ill.

233. Candlestick, spun brass, brush finish.

KISSELL, MARY LOIS—Designer, craftsworker, exhibitor; University of Chicago, Chicago, Ill.

234. Basket, "Marsh Wave" design.

235. Basket, raffia, Alaskan design.

KNIGHT, MARY C.—Designer, craftsworker, exhibitor ;  
Handicraft Shop, 1 Somerset Street, Boston, Mass.

236. Syrup jug and plate, silver.

LEINONEN, KARL, F.—Designer, craftsworker, exhibitor ;  
1 Somerset Street, Boston, Mass.

237. Silver ladle with ebony handle.

LEVIN, C. H.—Designer, craftsworker, exhibitor ; 6516  
Minerva Avenue, Chicago, Ill.

238. Scarf pin, silver, turquoise matrix.

239. Comb, silver, with turquoise.

240. Sleeve links, silver, ruby carbuncle.

241. Scarf pin, silver, turquoise.

LUTHER, JESSIE—Designer, craftsman, exhibitor ; 15  
Westminster Street, Providence, Rhode Island.

242. Small box, copper, champlévé, enamelled  
cover.

LUTHER, MABEL W.—Designer, crafts worker, exhibitor ;  
Providence, Rhode Island.

243. Necklace, silver, champlévé enamel.

244. Pen tray and ink well.

245. Box, copper and enamel.

246. Tea caddy, pottery, enamel cover.

McCLURE, ELIZABETH WATSON—Designer, crafts worker,  
exhibitor ; 1010 East 55th Street, Chicago, Ill.

247. Basket, raffia.

MAROT, ELIZABETH GRISCOM—Designer, craftsworker, exhibitor; 524 Walnut Street, Philadelphia, Pa.

248. "Architecture and History and Westminster Abbey," by William Morris. Reprinted at Cheswick Press, with golden type designed by William Morris for Kelmscott Press, London, 1900; Longmans & Co. Bound in full dark green crushed levant, gold tooled.

MINER, FLORENCE HART—Designer, crafts worker, exhibitor; 151 West Gilman Street, Madison, Wis.

249. Underglaze bowl in blue.

NEWCOMB COLLEGE, ART DEPARTMENT, New Orleans, La., Exhibitors.

250. Vase, motif, magnolia.  
Designed and modelled by Amilie Roman.
251. Vase.  
Designed and modelled by Sabina E. Wells.
252. Vase.  
Designed and modelled by Sabina E. Wells.
253. Vase, motif, moth.  
Designed and modelled by Marie Hoa-Le-Blanc.
254. Vase, motif, wild garlic.  
Designed and modelled by Marie Hoa-Le-Blanc.
255. Pitcher, motif, blackeyed Susan.  
Designed and modelled by Marie Hoa-Le-Blanc.
256. Pitcher, motif, iris.  
Designed and modelled by Sarah B. Levy.

OGDEN, CAROLINE SETON—Designer, craftsworker, exhibitor; 723 Racine Street, Milwaukee, Wis.

257. Smoking set, hammered copper, six pieces.

258. Portfolio, leather.

PARKER, GEORGE F.—Designer, crafts worker, exhibitor; P. O. Box 263 Taunton, Mass.

259. Oak cabinet with bronze fittings.

260. Pair bronze candle sconces with shields.

261. Bronze candlestick.

262. Bronze name plate and bell push. }

Bronze bell push. }

Bronze drawer pull. }

Pair bronze hinges. }

Bronze door knocker. }

Mounted  
on  
Walnut  
Boards.

PHILBRICK, STACY S.—Designer, craftsworker, exhibitor; 361 La Salle Avenue, Chicago, Ill.

263. Vase, green with metal glaze.

PHILLIPS, DELIA M.—Designer, craftsworker, exhibitor; 569 East Division Street, Chicago, Ill.

264. Lamp shade, brass, with open work design.

POPE, EVA—Designer, craftsworker, exhibitor; 565 West Adams Street, Chicago, Ill.

265. Basket, pine tree design.

266. Basket, Grecian design, copy of Pima basket.

267. Basket, design of horizontal and vertical lines.

---

PRESTON, JESSIE M.—Designer, craftsworker, exhibitor;  
1028 Fine Arts Building, Chicago, Ill.

- 268. Fob, silver, enamelled, with pebble.
- 269. Necklace, gold, opals and pearls.
- 270. Ring, gold, with three pearls.
- 271. Ring, gold, with opals.
- 272. Ring, silver, with opal.

REEVES, NELLIE S.—Designer, craftsworker, exhibitor;  
237 West Scoville Avenue, Oak Park, Ill.

- 273. Covered work basket, raffia.

ROTH, FRED. G. R.—Designer, craftsworker, exhibitor;  
571 Fifth Avenue, Windsor Arcade, New York, N. Y.

- 274. Elephant chained—Bronze.

STARR, ELLEN GATES—Designer, craftsworker, exhibitor;  
Hull House, Chicago, Ill.

- 275. Ornaments from "Book of Kells," designed  
by John Duncan.
- 276. Dove's Press, "Tennyson."
- 277. "Art and its producers."



STICKLEY, GUSTAV—Designer, craftsworker, exhibitor,  
Craftsman Building, Syracuse, New York.

278. Settle, inlaid, blue antique canvas cushion  
and two pillows.
279. Arm chair, calf cushions.
280. Arm chair, calf cushions.
281. Table desk.
282. Writing desk.
283. Desk chair.
284. Music cabinet.
285. Screen, craftsman fabric.
286. Andirons.
287. Fire set stand.
288. Shovel.
289. Poker.
290. Tongs.
291. Electrolier.
292. Pair tan linen window curtains.
293. Pair tan linen window curtains.
294. Pair tan linen window curtains.
295. Pair canvas portières.
296. Pair canvas portières.
297. Pair canvas portières.
298. Sixteen water colors.

STILES, GERTRUDE—Designer, craftsworker, exhibitor ;  
48 Thirty-third Place, Chicago, Ill.

## BOOKBINDING.

299. "The History of Rasselas," Philosopher Press. Bound in dark red levant, gold tooled.
300. Browning's "In a Balcony," Blue Sky Press. Bound in olive green levant, gold tooling.
301. Rossetti's "House of Life," Copeland & Day. Bound in Niger morocco, gold tooling.

STONE, ARTHUR J.—Designer, craftsworker, exhibitor;  
Station A., Gardner, Mass.

302. Jardiniere, copper, oak damascened with silver.
303. Compote, silver, chased crocus pattern.
304. Tea caddy, silver, moresque, damascened with gold.
305. Four bouillon spoons, Georgian design.

SWASTICA, SHOP—Exhibitors ; 824 Marshall Field Building, Chicago, Ill. WARD, FLORENCE & BENNETT, B.—Designers and craftsworkers.

306. Portfolio.
307. Bag, rose design.
308. Bag, thistle design.
309. Card case.
310. Card case.
311. Book cover.
312. Book cover.
313. Table mat, oriental design.
314. Bag, copper mounting.
315. Card case, tooled leather.

THOMSON, LUCY D.—Designer, craftsworker, exhibitor ;  
Belchertown, Mass.

316. Subbe Kashe rug, field of daisies design.

THRESHER, BRAINERD B.—Designer, craftsworker, ex-  
hibitor ; Dayton, Ohio.

317. Belt pin, ivory and coral.

318. Belt slide, silver gilt, ivory and coral.

319. Belt slide, silver gilt, ivory, three colored  
pearls.

320. Paper knife, silver, with amethyst.

321. Spoon, silver gilt, three baroque pearls.

322. Brooch, silver and abalone pearl.

323. Brooch, silver and abalone pearl.

324. Brooch, silver and abalone pearl.

325. Jardiniere, copper and opal matrix.

326. Clock, silver plate and baroque pearls.

327. Lamp, copper, opal matrix.

328. Lamp, abalone shell medallions set in filigree  
silver.

329. Pair candlesticks, silver plate, with baroque  
pearls.

330. Pair candle shades.

331. Brooch, silver and amethyst.

332. Brooch, silver gilt, ivory and baroque pearl.

333. Baroque pearl stick pin.

- 
334. Comb, ivory, with coral.
  335. Belt slide, ivory and silver gilt, three pearls.
  336. Belt pin, ivory and silver gilt, one small pearl.
  337. Belt pin, ivory and silver gilt.
  338. Brooch, gold, ivory and pearls, "Rhythm of the Waters."
  339. Brooch, silver and abalone pearl.
  340. Belt slide, silver gilt with two abalone pearls.
  341. Brooch, silver and opal matrix.
  342. Belt slide, silver gilt with two abalone pearls.
  343. Brooch, silver, opal matrix.
  344. Belt slide, silver and copper, opal matrix.
  345. Pendant with turquoise.
  346. Pendant in gold, rose and green tourmaline.
  347. Brooch, gold, rose and green tourmaline.
  348. Brooch, gold, pear shaped abalone pearl, three round pearls.
  349. Pearl pendant.
  350. Belt slide, turquoise matrix.
  351. Belt slide, silver and abalone shell.
  352. Pearl ring.
  353. Opal ring.
  354. Pendant, gold, with turquoise.
  355. Inkstand, copper with opals.

TIFFANY, LOUIS COMFORT—Designer and exhibitor;  
Corona, Long Island, N. Y. Tiffany Furnaces, craftworkers.

- 356. Vase.
- 357. Vase.
- 358. Vase.
- 359. Vase.
- 360. Vase.
- 361. Vase.
- 362. Vase.
- 363. Vase.
- 364. Vase.
- 365. Vase.
- 366. Vase.
- 367. Vase.
- 368. Vase.
- 369. Vase.
- 370. Vase.
- 371. Vase.
- 372. Vase.
- 373. Vase.
- 374. Vase.
- 375. Vase.
- 376. Vase.
- 377. Vase.
- 378. Enamel.
- 379. Enamel.
- 380. Enamel.
- 381. Enamel.
- 382. Enamel.
- 383. Enamel.
- 384. Enamel.

TRIPP, B. WILSON—Designer and exhibitor; Montreux, Switzerland. Executed by M. BALLIN.

385. Pendant in silver and translucent enamel set with Siberian amethysts.
386. Pendant in silver set with opal matrix.

UPDIKE, GRACE D. LONG — Designer, craftsworker, exhibitor; Geneva, Ill.

387. Cream pitcher and sugar bowl.

VAN BRIGGLE POTTERY CO. — Exhibitors. VAN BRIGGLE, ARTUS—Craftsworker. VAN BRIGGLE ANNE GREGORY and VAN BRIGGLE ARTUS—Designers and Modellers.

388. Vase. }  
389. Vase. }  
390. Vase. } Designed and modelled by Mrs. A. G.  
391. Vase. } Van Briggles.  
392. Vase. }  
393. Vase. }  
394. Vase. Designed and modelled by A. Van Briggles.
395. Vase. }  
396. Vase. } Designed and modelled by Mrs. A. G.  
Van Briggles.
397. Vase. Designed and modelled by A. Van Briggles.

398. Vase. }  
399. Vase. }  
400. Vase. }  
401. Vase. }  
402. Vase. } Designed and modelled by Mrs. A. G.  
403. Vase. } Van Briggie.  
404. Vase. }  
405. Vase. }  
406. Vase. }  
407. Vase. }
408. Vase. Designed by A. Van Briggie, modelled  
by George B. Young.
409. Vase. Designed and modelled by Mrs. A. G.  
Van Briggie.
410. Vase. Designed and modelled by A. Van  
Briggie.
411. Vase. Designed and modelled by George B.  
Young.
412. Vase. Designed and modelled by Mrs. A.  
G. Van Briggie.
413. Vase. Designed and modelled by A. Van  
Briggie.

414. Vase. }  
 415. Vase. }  
 416. Vase. } Designed and modelled by Mrs. A. G.  
 417. Vase. } Van Briggie.  
 418. Vase. }  
 419. Vase. }
420. Vase. Designed by A. Van Briggie, modelled  
 by George B. Young.
421. Vase. }  
 422. Vase. } Designed and modelled by Mrs. A. G. Van  
 423. Vase. } Briggie.
424. Vase. }  
 425. Vase. } Designed by A. Van Briggie, modelled by  
 George B. Young.
426. Vase. }  
 427. Beer set, seven pieces } Designed and modelled by  
 Mrs. A. G. Van Briggie.

VERBURG, PETER—Designer, craftsworker, exhibitor;  
 Hull House, Chicago, Ill.

#### BOOKBINDING.

428. "King Wenceslaus."  
 429. "Wayside Inn."

WAITE, ELLEN R.—Maker and exhibitor; Hull House,  
 Chicago Ill. HAZENPLUG, FRANK—Designer.

430. Embroidered square.



WANZER, FLORENCE—Designer, craftsworker, exhibitor.

431. Waste paper basket.

WARD, HELEN GLENN—Designer, craftsworker, exhibitor;  
Mamaroneck, New York.

432. Belt buckle, silver, light blue enamel.

433. Lace pin with opal, enamelled, head of man.

434. Two salt cellars, silver, with spoons.

435. Belt buckle, gold plate border.

436. Book cover, silver.

WILRO SHOP — Exhibitor; 818 Fine Arts Building,  
Chicago, Ill. DOLESE, ROSE and DOLESE MINNIE—Designers, crafts  
workers.

437. Writing portfolio.

438. Bag with carved ivory ornament.

439. Bag with bronze ornament.

440. Book for clippings.

441. Coin purse with copper clasp.

442. Card case.

443. Card case.

444. Card case.

445. Card case.

446. Card case.

447. Card case.

- 
- 448. Case for laces, Japanese design, with old ivory ornaments.
  - 449. Case for spectacles with silver bead.
  - 450. Pouch with filigree head.
  - 451. Bag with carved ivory.
  - 452. Bag, beaded with carved Japanese bead.
  - 453. Bag, carved Japanese red bead.
  - 454. Address book.

NYSTROM, CHRISTINA—Designer, craftsworker.

- 455. Couch cover, Swedish, blue and white, hand hand woven.
- 456. Table cover, Swedish, blue, white, and green, hand woven.
- 457. Table scarf, Swedish linen, hand woven.
- 458. Cover, Swedish, hand woven.

WINLOCK, MARY P.—Designer, craftsworker; HANDICRAFT SHOP—Exhibitors; 1 Somerset Street, Boston, Mass.

- 459. Belt buckle, silver, green and white enamel.
- 460. Match box, silver, enamelled..

WINSTON, CAROLYN MUMFORD—Designer, crafts worker and exhibitor: 6127 Kimbark Avenue, Chicago, Ill.

- 461. Basket, raffia.

WOODSON, MARIE L.—Designer; 267 Evans Street, Denver, Col.

462. Illuminated poem, "O little town of Bethlehem."

463. Illuminated psalm.

WUEST, FLORENCE and WUEST, IRENE—Designers, craftworkers, exhibitors; Portland, Oregon.

464. Navajo basket, pine cone design.